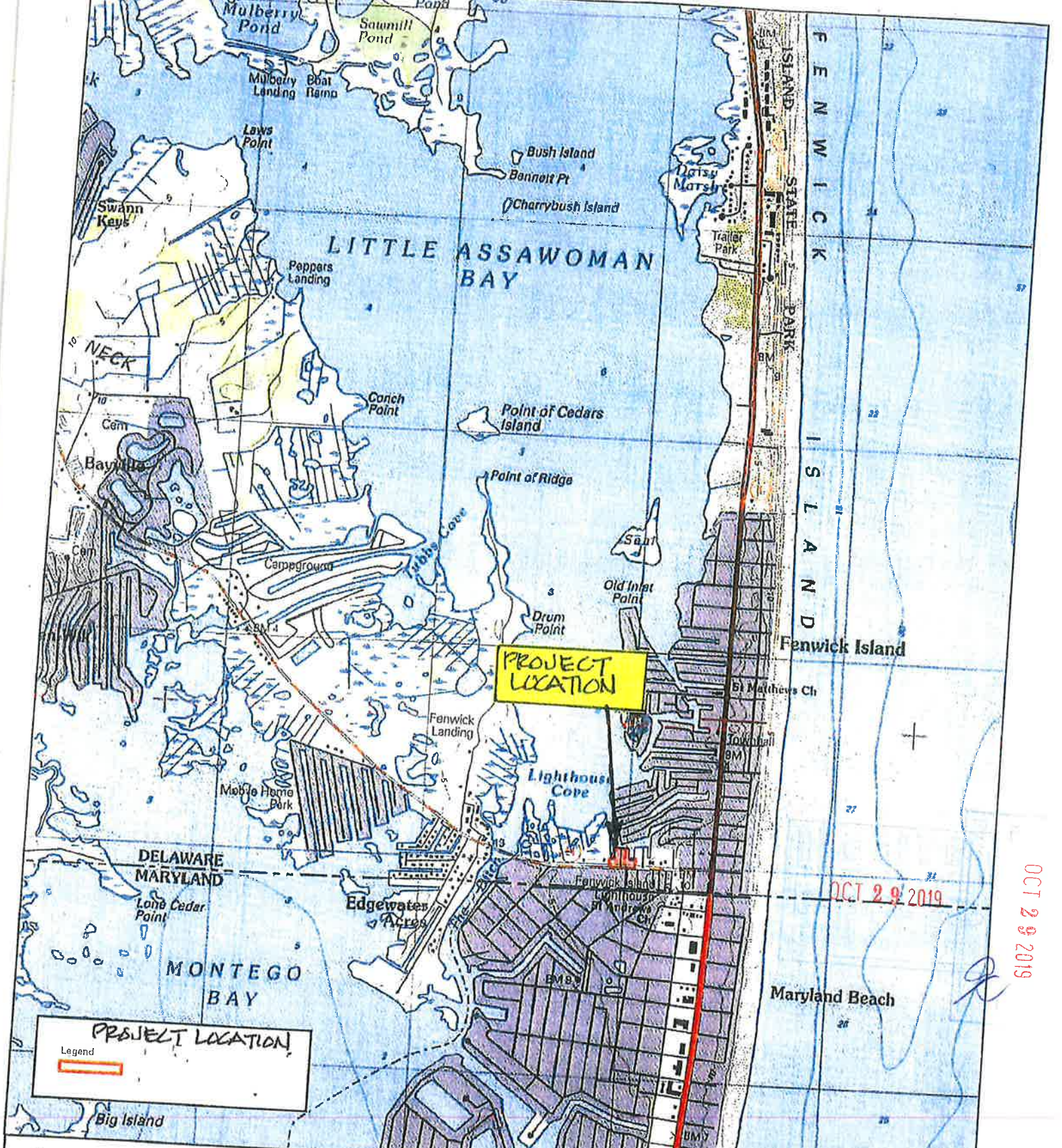


EXHIBIT A

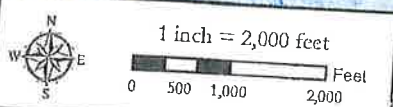
COMMUNITY DOCKING PLAN

OCT 29 2019

A handwritten signature in blue ink, appearing to be the initials 'JK', is written over a faint rectangular stamp.



PROJECT LOCATION
Legend
[Red line symbol]



USGS TOPOGRAPHIC MAP
ASSAWOMAN BAY QUADRANGLE
TOWNES AT BAYSIDE VILLAGE

LOCATION MAP
TAX MAP 134-23.00-3.02
SUSSEX COUNTY, DELAWARE

OCT 29 2019

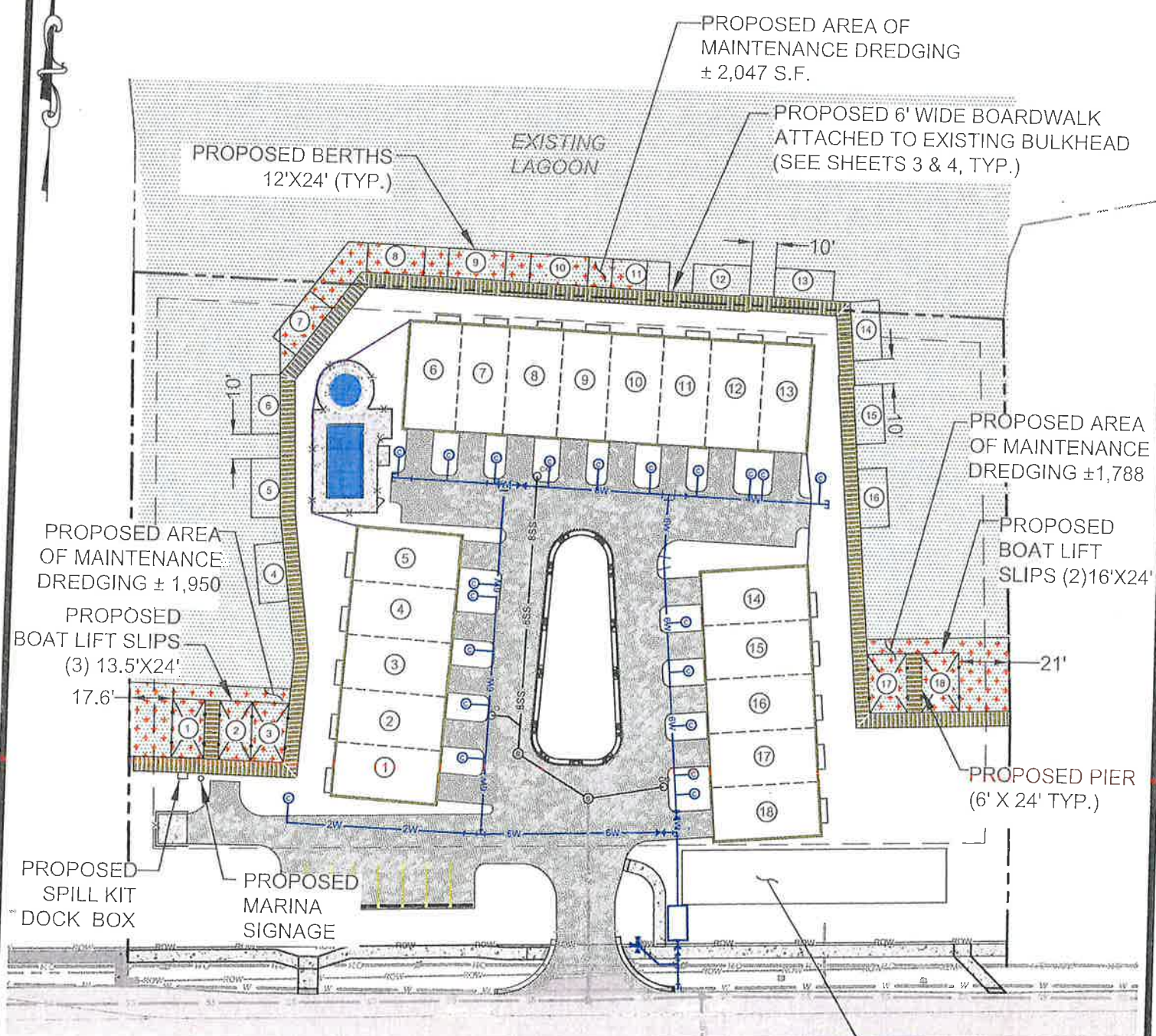
OCT 29 2019

ERI ENVIRONMENTAL RESOURCES, INC.

Date: OCTOBER 21 2019
Revisions:

Dwn. By: JLW
Proj. No.: 736#829

SHEET:
1



PROPOSED AREA OF MAINTENANCE DREDGING ± 2,047 S.F.

PROPOSED 6' WIDE BOARDWALK ATTACHED TO EXISTING BULKHEAD (SEE SHEETS 3 & 4, TYP.)

PROPOSED BERTHS 12'X24' (TYP.)

EXISTING LAAGOON

PROPOSED AREA OF MAINTENANCE DREDGING ± 1,788

PROPOSED BOAT LIFT SLIPS (2) 16'X24'

PROPOSED AREA OF MAINTENANCE DREDGING ± 1,950

PROPOSED BOAT LIFT SLIPS (3) 13.5'X24'

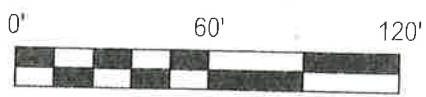
PROPOSED PIER (6' X 24' TYP.)

PROPOSED SPILL KIT DOCK BOX

PROPOSED MARINA SIGNAGE

PROPOSED DREDGE SPOIL DISPOSAL AREA 22'X110'

GRAPHIC SCALE



SCALE: 1"=60'

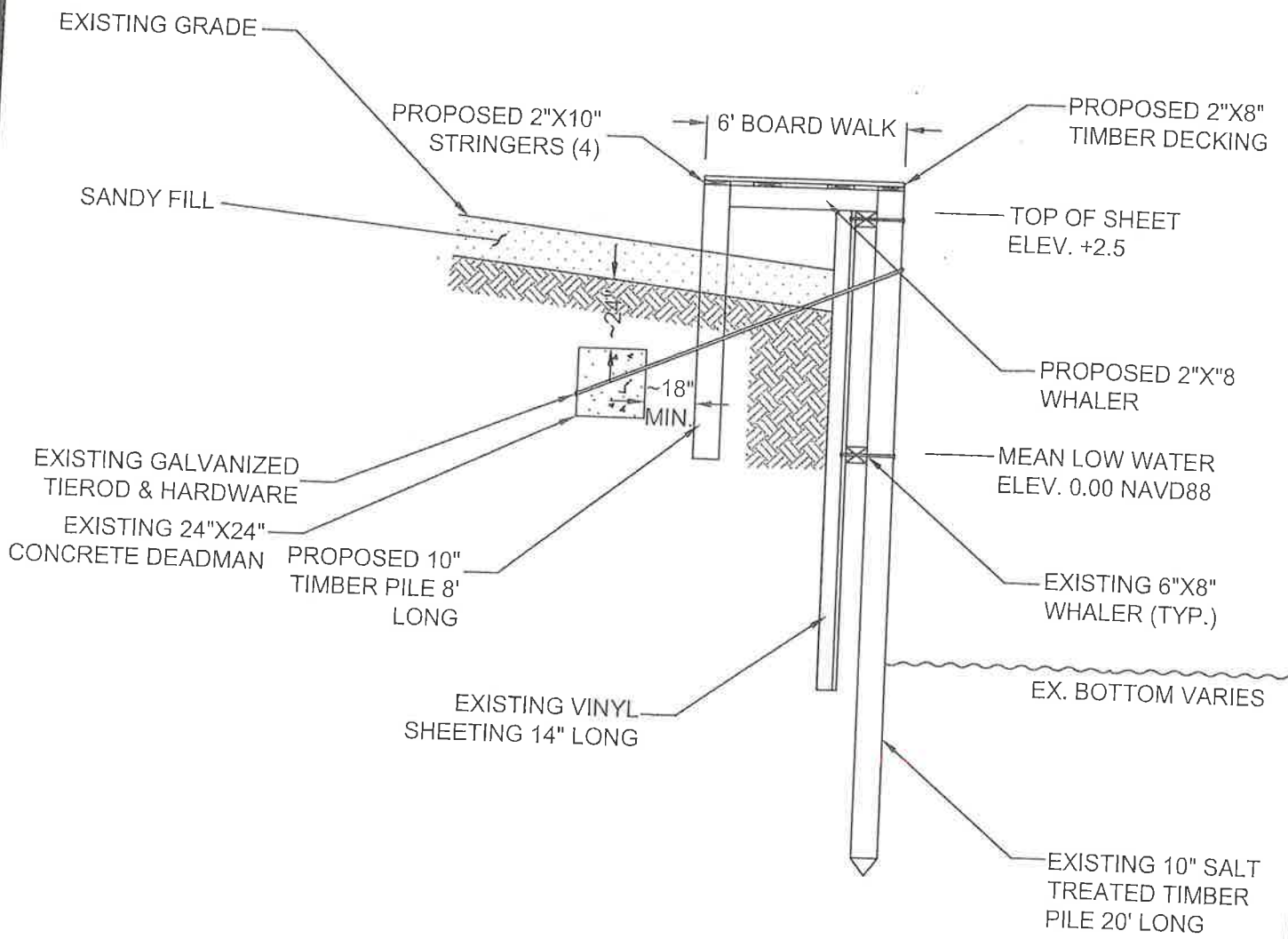
RECEIVED
DEC 17 2019
By _____

DATE: OCTOBER 21, 2019	
DRAWN BY: SPR	APPROVED BY: RHS
FILE: P18028 - SITE PLAN	
REVISIONS	
12/10/19	

SHEET 2
COMMUNITY DOCKING PLAN
FOR
THE TOWNES AT BAYSHORE VILLAGE
TAX MAP PARCEL 134-23.00-3.02
BALTIMORE HUNDRED
SUSSEX COUNTY, DELAWARE

CEA CIVIL ENGINEERING ASSOCIATES, LLC
• ENGINEERING • SURVEYING • CONSTRUCTION SERVICES

55 WEST MAIN STREET
MIDDLETOWN, DE 19709
(302) 376-8833
FAX (302) 376-8834
CEA-DE.COM



**PROPOSED BOARDWALK
PILE CAP FOR EXISTING
BULKHEAD**
NTS

OCT 29 2019

[Handwritten signature]

DATE: OCTOBER 21, 2019	
DRAWN BY: SPR	APPROVED BY: RHS
FILE: P18028 - SITE PLAN	
REVISIONS	

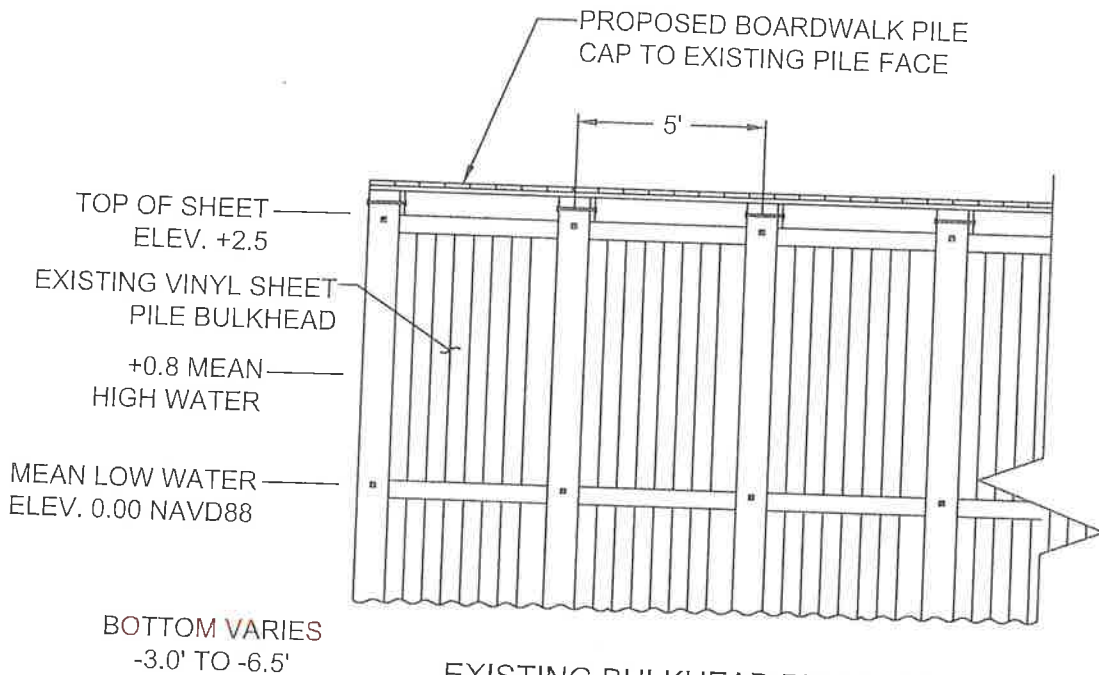
SHEET 3
**COMMUNITY DOCKING
PLAN**
FOR
**THE TOWNES AT
BAYSHORE VILLAGE**
TAX MAP PARCEL 134-23.00-3.02
BALTIMORE HUNDRED
SUSSEX COUNTY, DELAWARE

Copyright © 2016

**CEA CIVIL ENGINEERING
ASSOCIATES, LLC**

• ENGINEERING • SURVEYING • CONSTRUCTION SERVICES

55 WEST MAIN STREET
MIDDLETOWN, DE 19709
(302) 376-8833
FAX (302) 376-8834
CEA-DE.COM



OCT 29 2019

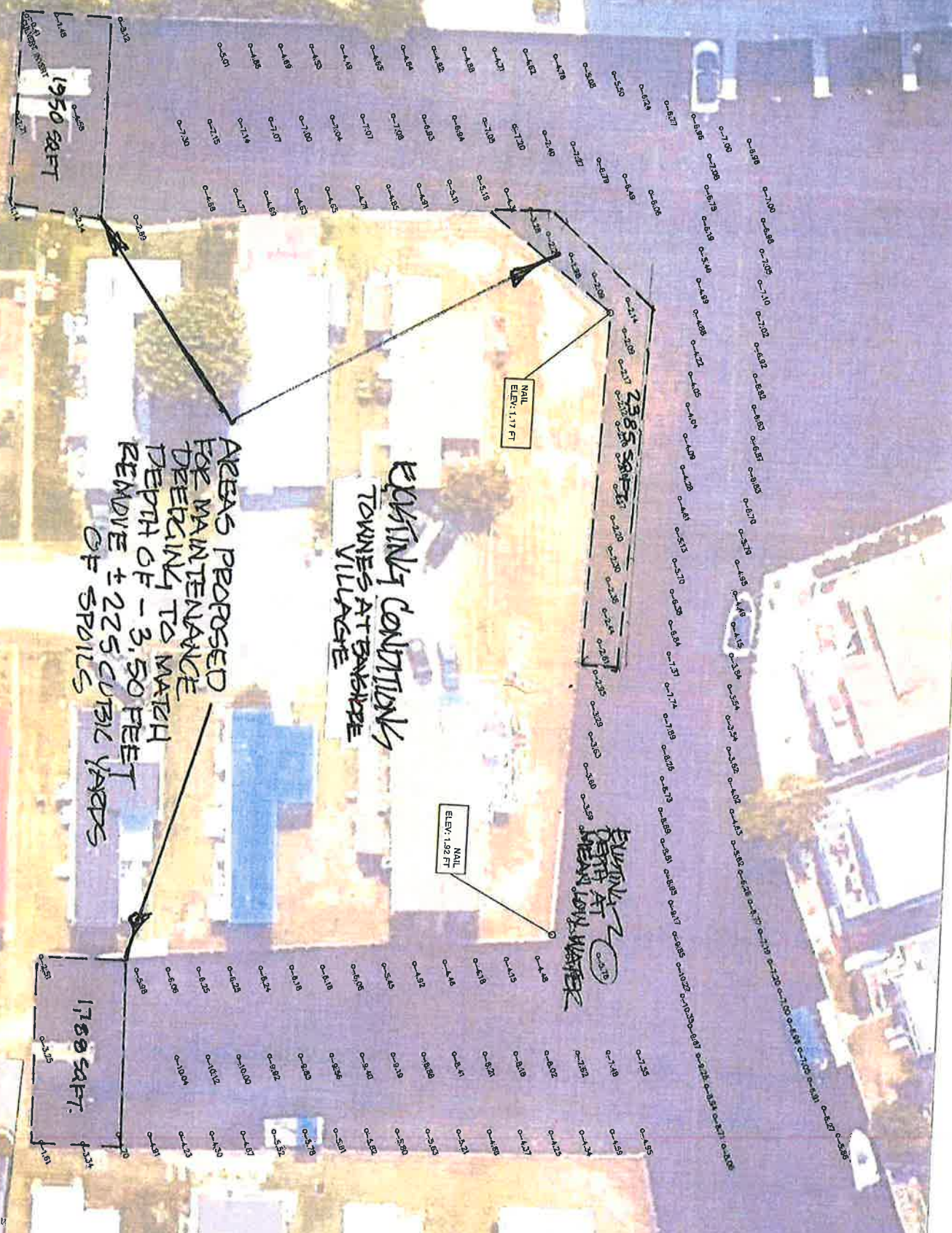
[Handwritten signature]

Copyright © 2016

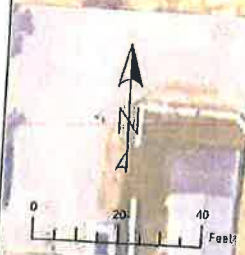
DATE: OCTOBER 21, 2019	
DRAWN BY: SPR	APPROVED BY: RHS
FILE: P18028 - SITE PLAN	
REVISIONS	

SHEET 4
COMMUNITY DOCKING PLAN
FOR
THE TOWNES AT BAYSHORE VILLAGE
TAX MAP PARCEL 134-23.00-3.02
BALTIMORE HUNDRED
SUSSEX COUNTY, DELAWARE

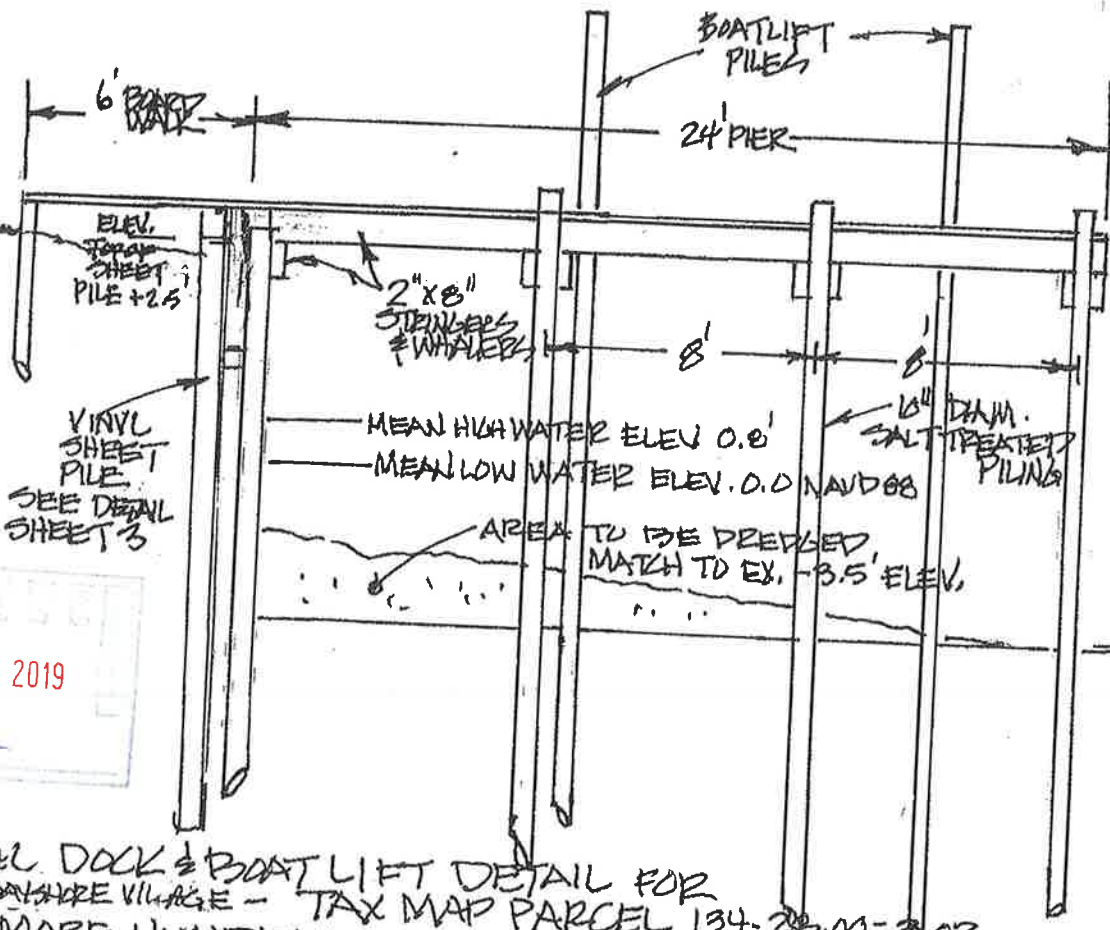
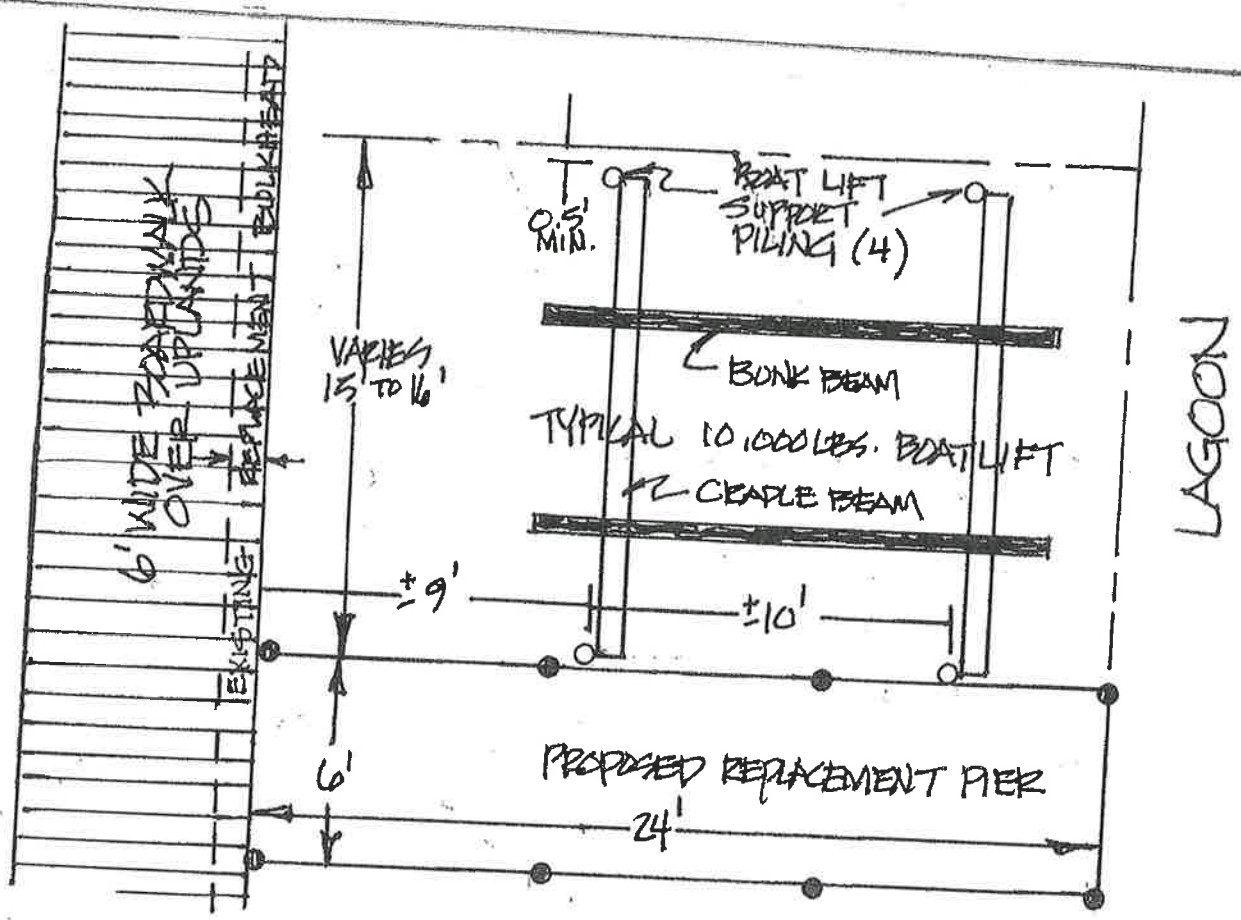
CEA CIVIL ENGINEERING ASSOCIATES, LLC
 ● ENGINEERING ● SURVEYING ● CONSTRUCTION SERVICES
 55 WEST MAIN STREET
 MIDDLETOWN, DE 19709
 (302) 376-8833
 FAX (302) 376-8834
 CEA-DE.COM



OCT 29 2019



EXISTING CONDITIONS, SOUNDINGS & PROPOSED DREDGING LOCATIONS
 TOWNES AT BAYSHORE VILLAGE TAX MAP PARCEL 134-23.00-3.02
 BALTIMORE HUNDRED SUSSEX COUNTY DELAWARE
 OCT. 21 2019
 SCALE: AS SHOWN
 SHEET 5



OCT 29 2019

GR

TYPICAL DOCK & BOATLIFT DETAIL FOR
 TOWNES AT BAYSHORE VILLAGE - TAX MAP PARCEL 134-25.00-302
 BALTIMORE HUNDRED SUSSEX COUNTY DE
 OCTOBER 21, 2019
 N.T.S.

SHEET 6