



Public Hearing

April 25, 2018

Lisa Dharwadkar, Milind Lele

Walan Specialty Construction Products, LLC

Craig Holdefer

Compliance Plus Services, INC

Our Company

Walan Specialty Construction Products, LLC

Our Vision:

Our company will service the growing demand for safer, stronger, and longer lasting structures, by producing high quality ground granulated blast furnace slag (GGBFS) which is a cement additive. In doing so, our company fosters sustainability by leveraging a material which ultimately reduces CO₂ emissions when used in cement making. Most importantly, our company will create opportunities for job growth and career advancement for the talented workforce in the Wilmington area, while supporting the local economy

Background

- ▶ **For over 30 years, we have been in the mineral grinding business and in full compliance with PA State Air Quality regulations**
 - ▶ In operation since 1982, we have an iron ore grinding plant in Adrian, PA, servicing large clients across the globe.
 - ▶ In operation since 1987, is an iron chromite grinding plant in Claysburg, PA
 - ▶ We always perform with consideration for the health and safety of our employees, partners and customers.

- ▶ **Our future in Wilmington**
 - ▶ Various state Department of Transportations (DOTs) are beginning to require GGBFS as Cement Additive in DOT funded projects
 - ▶ Ground Granulated Blast Furnace Slag represents the best alternative to lowering emissions of an industry that will experience a substantial growth within the construction building sector of our economy.

Proposed Location and Facility

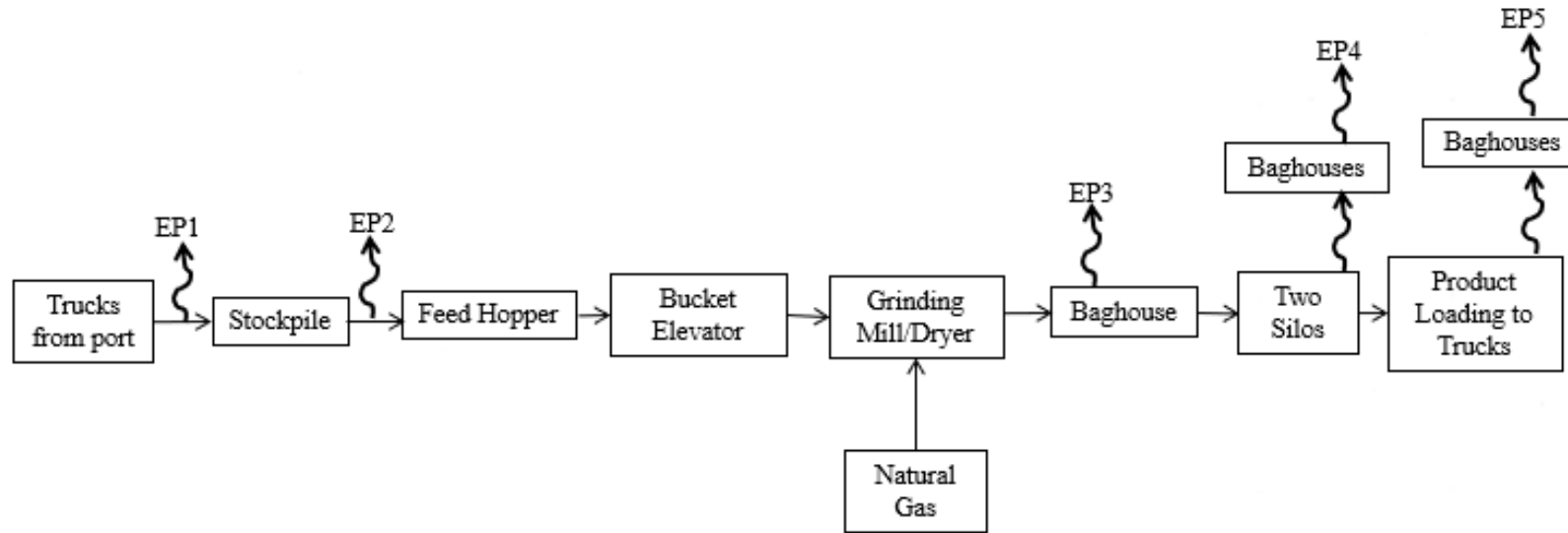
Location in Wilmington, DE



The Process - Grind and Storage of Granulated Blast Furnace Slag (GBFS)

Overview of our Process

Granulated Blast Furnace Slag (GBFS) Grinding Facility



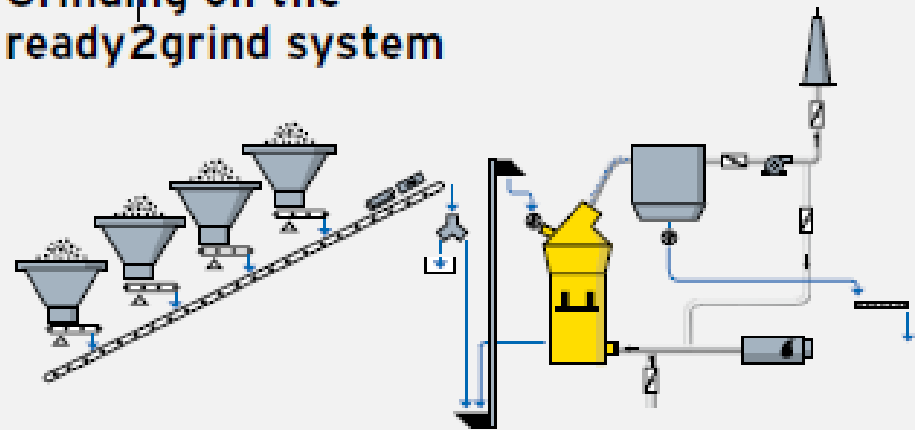
Wala Specialty Construction Products, LLC 501 Christians Avenue Wilmington, DE 19801	COMPLIANCE PLUS SERVICES, INC. 455 BUSINESS CENTER DRIVE SUITE 250 HORSHAM, PA 19044 PHONE (215) 734-1414 * FAX (215) 734-1424 www.CPS-2Comply.com	 COMPLIANCE PLUS SERVICES, INC.	Project No. 0380.01 Scale: NA Approved By: C. Holdefer Drawn By: B. Mayer
Drawing: Process Flow Diagram			

The Grinding Operation

- ▶ New Gebr. Pfeiffer Vertical Roller Mill, modular system



Grinding on the ready2grind system



Product Storage Silos

- ▶ After grinding, our finished product GGBFS will be stored in sealed Silos with dustless loading spout.



Finished product transport

- ▶ Enclosed bulk tanker trucks with sealed hatches will carry GGBFS, our finished product, out of the plant.



Proposed Truck Routes to and from the Facility

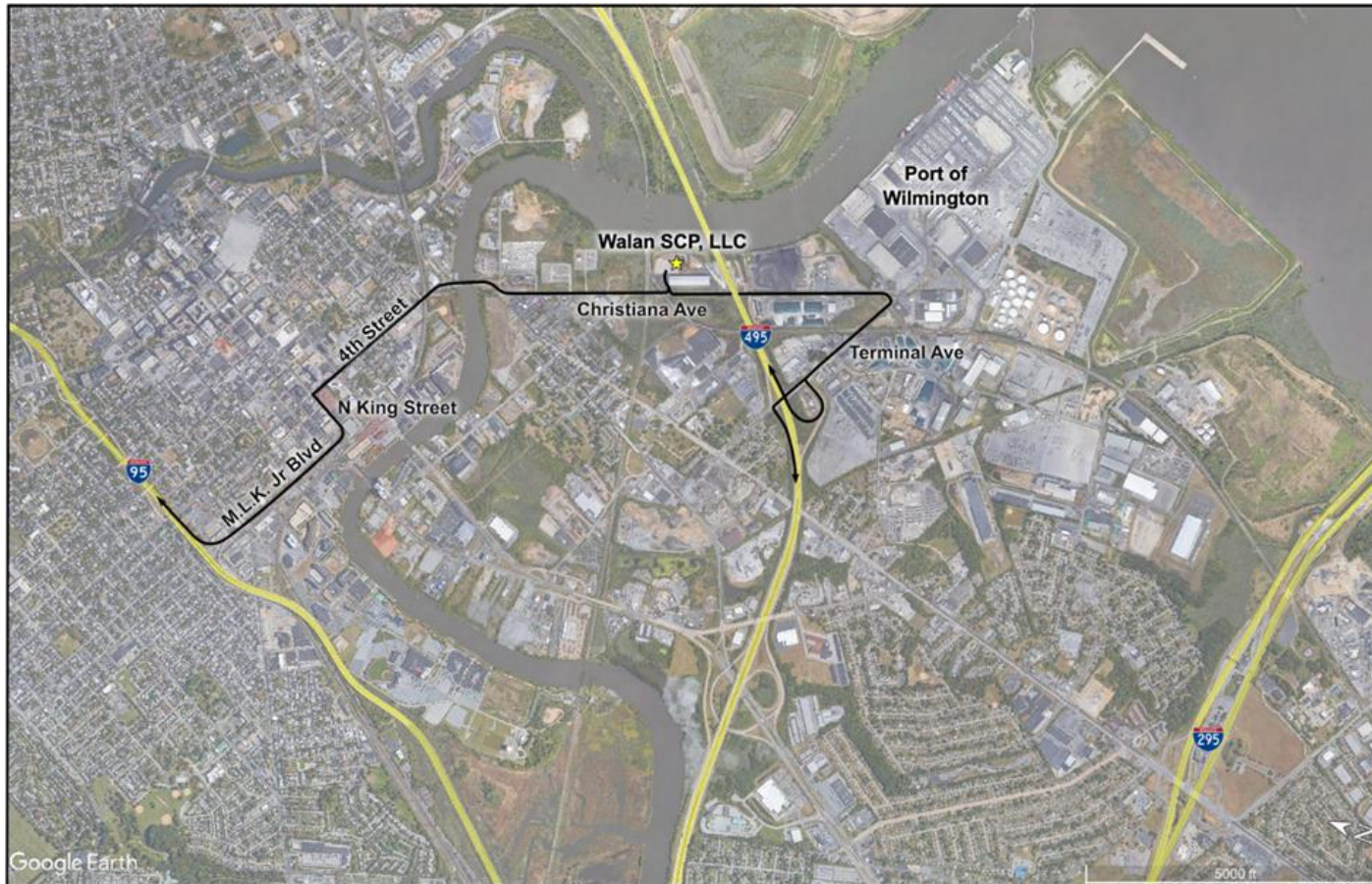
Receipt of GBFS at the Facility

- ▶ Truck Route inbound to Walan SCP, LLC from the Port of Wilmington (avoids residential areas)



Shipment of GGBFS from the facility

- ▶ Truck route outbound from Walan SPC, LLC (avoids residential areas):



Projected Emissions and Controls

Criteria Air Pollutants

Walan Specialty Construction Products, LLC Emissions from Combustion of Natural Gas Comparison of Emissions with Another Combustion Source

Pollutant	Walan SCP, LLC (tons/year) ^(1,3)	Boilers @ High School (tons/year) ^(2,3)
PM10	0.0007	0.169
NOx	1.81	2.23
CO	1.52	1.87
SO2	0.011	0.013
VOC	0.100	0.123

(1) Walan SCP, LLC has one natural gas burner rated at 7.3 million BTUs per hour to dry the GBFS during grinding. The PM10 emissions are controlled by a baghouse.

(2) A typical high school will use 2-3 boilers with burners rated at about 9 million BTUs per hour to heat the school. The emission assume that only one boiler operates and the PM10 emissions are not controlled.

(3) Emission are based on the equipment operating 5000 hours per year.

Baghouse Control for Grinding Mill



Baghouse Control for Storage Silos



Dustless Load Out from Silos



Fugitive Dust Control Methods

- ▶ Prior to processing, the moisture content of the material will be maintained at 8-10% to help reduce the potential for emissions.
- ▶ The drop height of material from front end loader into feed hopper will be kept to a minimum.
- ▶ All truck beds on vehicles entering the facility from the port will be covered.
- ▶ Truck traffic will be limited to paved surfaces.
- ▶ As needed, facility roadways will be cleaned using a water truck and/or street sweeper.
- ▶ Facility-wide speed limits will be enforced to reduce associated dust emissions.
- ▶ All equipment will be regularly inspected and maintained to ensure proper system performance.
- ▶ Neat and orderly work areas will be maintained.
- ▶ Routine and regular cleanup of any spilled GBFS will occur.
- ▶ Employees will be provided training about good housekeeping practices.
- ▶ Daily inspections of the facility will be conducted to identify and correct any sources of fugitive emissions.
- ▶ Results of the inspections and any corrective actions taken will be documented on a daily recordkeeping report form.

Thank you