



This newsletter from the Delaware Coastal Training Program (CTP) features resources that are available for Delaware's community leaders and natural resource managers to help us plan smarter for safer and more sustainable communities in our state! These updates will include highlights on upcoming trainings, tools, technical assistance programs, and funding sources from the CTP as well as other local practitioners and technical experts. This newsletter will be distributed quarterly - please be in touch if you have more updates to share or are looking for additional information!

Upcoming Conference

Delaware Invasive Species Council 2016 Annual Meeting

This year's [Delaware Invasive Species Council's](#) annual meeting will explore how land and natural resource managers, conservationists, and others that want their voices heard are keeping up with the fight on the invasive species by voting them out!

The annual meeting covers a full range of invasive species, including aquatic and terrestrial plants, animals and pathogens that impact native species and threaten Delaware's natural resources, economy, and quality of life.

Registration opens at 8:30 am and the conference will kick off at 9:00 am. Annual membership and lunch is included in registration fee.

**Online registration ends on Wednesday,
October 5**

Space is limited and registration at the door is not available.

Where

The conference will be held at the Delaware Agriculture Museum in Dover, Delaware.

[Register Here](#)



Vote DISC 2016!

Delaware Invasive Species Council
Annual Meeting and Conference
October 19, 2016



New Networking Session!

Join DISC for a special networking event following our 2016 Annual Meeting!

Network with fellow invasive species professionals on Frazier's patio that overlooks the adjacent Mirror Lake Restoration Project and while enjoying some complimentary hors d'oeuvres!

Food will be available from 4-7pm at Frazier's Restaurant and Bar, 9 East Lookerman Street, Dover. This event will immediately follow the meeting. We hope you will join us to relax after a full and informative meeting!

Community Resources and Tools

[From the NOAA Office for Coastal Management](#)

Overview

This online visualization tool supports communities that are assessing their coastal hazard risks and vulnerabilities. The tool creates a collection of user-defined maps that show the people, places, and natural resources exposed to coastal flooding.

The maps can be saved, downloaded, or shared to communicate flood exposure and potential impacts. In addition, the tool provides guidance for using these maps to engage community members and stakeholders.

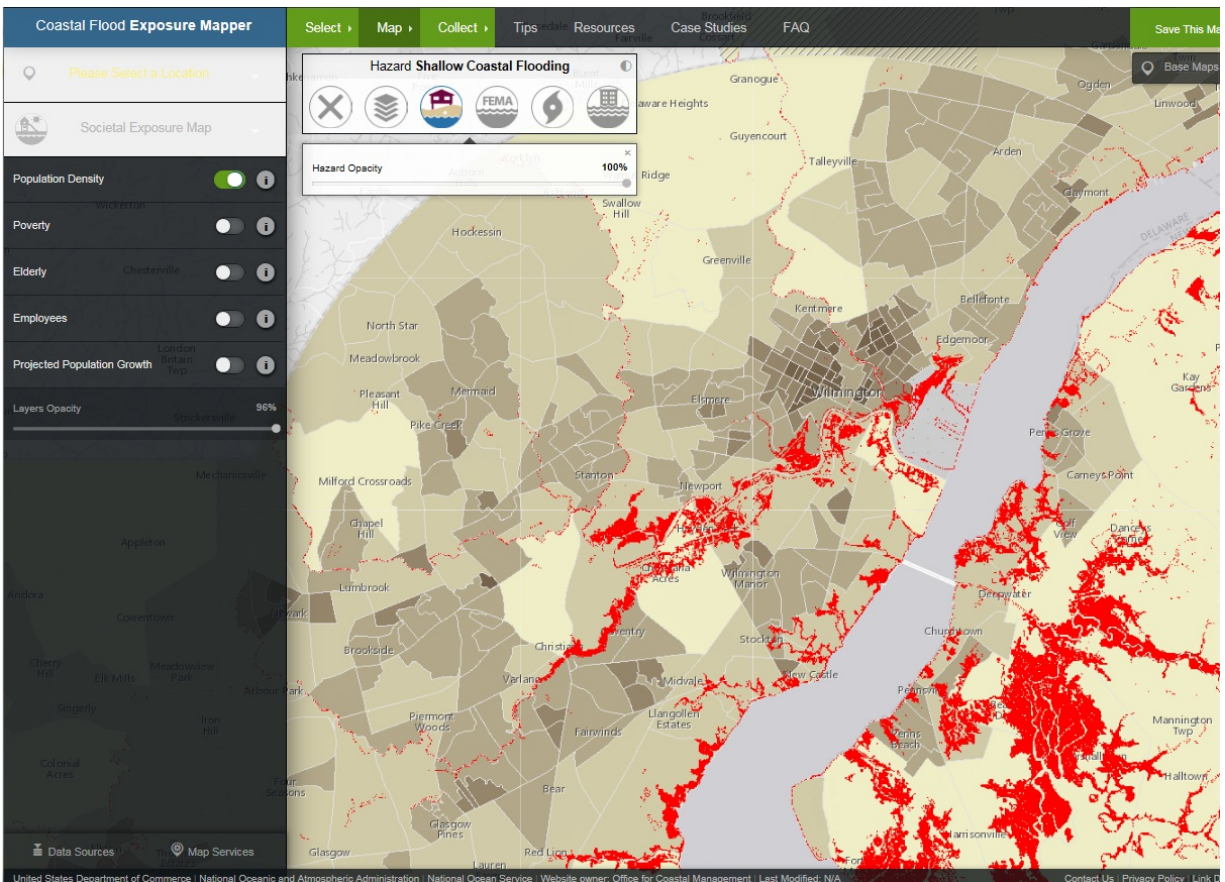
Features

- Visualize people, places, and natural resources exposed to coastal flood hazards
- Share online maps to communicate with and engage stakeholders

Additional Information

- [Frequently Asked Questions](#)
- Access the [map services](#) and [data](#) used in the tool

For technical assistance, or to share how you are using the mapper, contact [NOAA's Office for Coastal Management](#).



Upcoming Webinars

OpenNSPECT

November 16, 2016 2 PM - 5 PM or
February 15, 2017 2 PM - 5 PM

On-line Live webinar from the NOAA Office for Coastal Management

Free event, registration required.
[Follow this link to sign up](#)

About the Webinar

A land cover analysis can be used to help planners better understand the relationships between land use and water quality. Join this course to learn the technical aspects of OpenNSPECT, a GIS-based tool used to estimate runoff, nonpoint source pollution, and erosion. Participants listen to an introductory lecture and perform hands-on exercises to practice using various tool functions.



Who Should Take This Course?

This course is designed for GIS professionals, including regional and municipal planners and natural resource managers, working on land use and watershed management projects.

You Will Learn How To

- Recognize and access the functionality available in the OpenNSPECT software
- Identify data requirements
- Explore the impacts of different land uses and land management scenarios
- Interpret tool outputs

OpenNSPECT runs in the MapWindow GIS desktop software environment. MapWindow is a free, open-source GIS software package. After registration, you will be sent instructions on downloading and installing both MapWindow and OpenNSPECT.

- Apply OpenNSPECT for your project needs

For additional course or registration information, e-mail: ocm.training@noaa.gov

Integrating Climate Change Resilience into Transportation Asset Management

Thursday, October 13, 2016 2 PM - 4PM

[Click here for registration and additional information](#)

The Transportation Research Board (TRB) will conduct a webinar that highlights some of the common themes that emerged from the 11th National Conference on Transportation Asset Management, which took place July 10-12, 2016 in Minneapolis, Minnesota. Several sessions focused on integrating climate change and extreme weather event resilience approaches into transportation asset management.

This webinar was organized by the TRB Standing Committee on Transportation Asset Management. Participants must register in advance of the webinar, and there is a fee for non-TRB Sponsor or non-TRB Sustaining Affiliate employees. A certificate for 2.0 Professional Development Hours (PDHs) will be provided to attendees who register and attend the webinar as an individual. This webinar is pending approval by the American Institute of Certified Planners for 2.0 Certification Maintenance Credits.

You Will Learn How To

- Describe the growing importance of climate change and extreme weather events in transportation agency decision-making
- Identify trends and challenges with respect to the inclusion of climate change risks in asset management practices
- List tools and methods to account for climate change and extreme weather risks in asset management systems



Webinar Presenters

- Robert Kafalenos, U.S. Federal Highway Administration
- Sue McNeil, University of Delaware
- Michael Meyer, WSP-Parsons Brinkerhoff
- Cassandra Bhat, ICF International
- Jeffrey Neal, North Central Texas Council of Governments

Moderated by: Heather Holsinger, Federal Highway Administration

Seven Best Practices for Risk Communication

December 6, 2016 1 PM - 2:30 PM

On-line Live webinar from the NOAA Office for Coastal Management

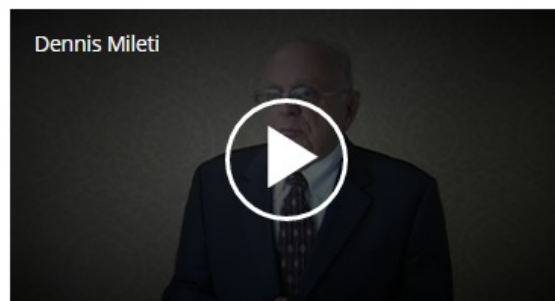
Free event, registration required.
[Follow this link to sign up](#)

About the Webinar

Understanding risk is a key component for initiatives focused on helping communities prepare for and respond to weather and climate hazards. This interactive webinar introduces participants to seven best practices, numerous techniques, and examples for communicating about coastal hazards. Whether

Featured Video

Watch risk communication expert Dennis Mileti explain the biggest mistake in risk communication.



Who should take this course?

This course is targeted for a broad cross section of

beginning a new effort or trying to keep people motivated to better prepare for future hazards, applying risk communication principles will lead to more effective results.

For additional course or registration information, e-mail: ocm.training@noaa.gov

professionals involved in emergency management, planners, building and zoning officials, mitigation specialists, developers, engineers, architects, and property managers.

Funding Opportunities

Delaware Database for Funding Resilient Communities

The Institute for Public Administration (IPA) at the University of Delaware, with support from Delaware Coastal Programs, conducted an extensive search of financial assistance programs that support the implementation of resiliency-building plans and projects in Delaware and compiled the findings into an accessible and intuitive online searchable database.

While planning and technical assistance programs were identified and included, IPA's search prioritized financial assistance programs that support the implementation of high-cost activities such as infrastructure improvements, facility retrofitting, construction, and land acquisition. The sorting feature enables users to quickly and easily filter programs by four categories.



Delaware Database for Funding Resilient Communities Video Tutorial

The database is available at:
www.sppa.udel.edu/research-public-service/ddfrc

As a part of our mission, the Delaware National Estuarine Research Reserve is committed to promoting informed decision making through the Delaware Coastal Training Program. This program addresses critical coastal resource management issues in Delaware by providing current scientific information, access to technologies and skill-building opportunities to Delawareans responsible for making decisions about the state's coastal resources.

Requests for submittal: Have a great resource, training, or program that you want to share with Delaware community leaders and natural resources managers to help make our communities safer and more sustainable? Please submit information for inclusion in this e-newsletter to the contact below by April 15 (for spring issue), July 15 (summer), October 15 (fall), January 15 (winter).

Visit our Website

Kelly Valencik | Delaware National Estuarine Research Reserve | 302-739-6377
kelly.valencik@state.de.us | <http://de.gov/dectp>

STAY CONNECTED

