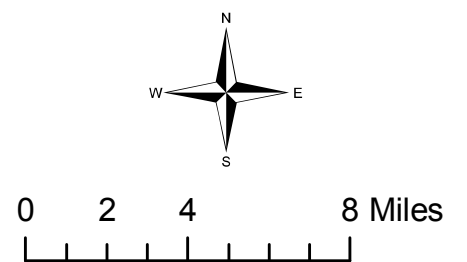
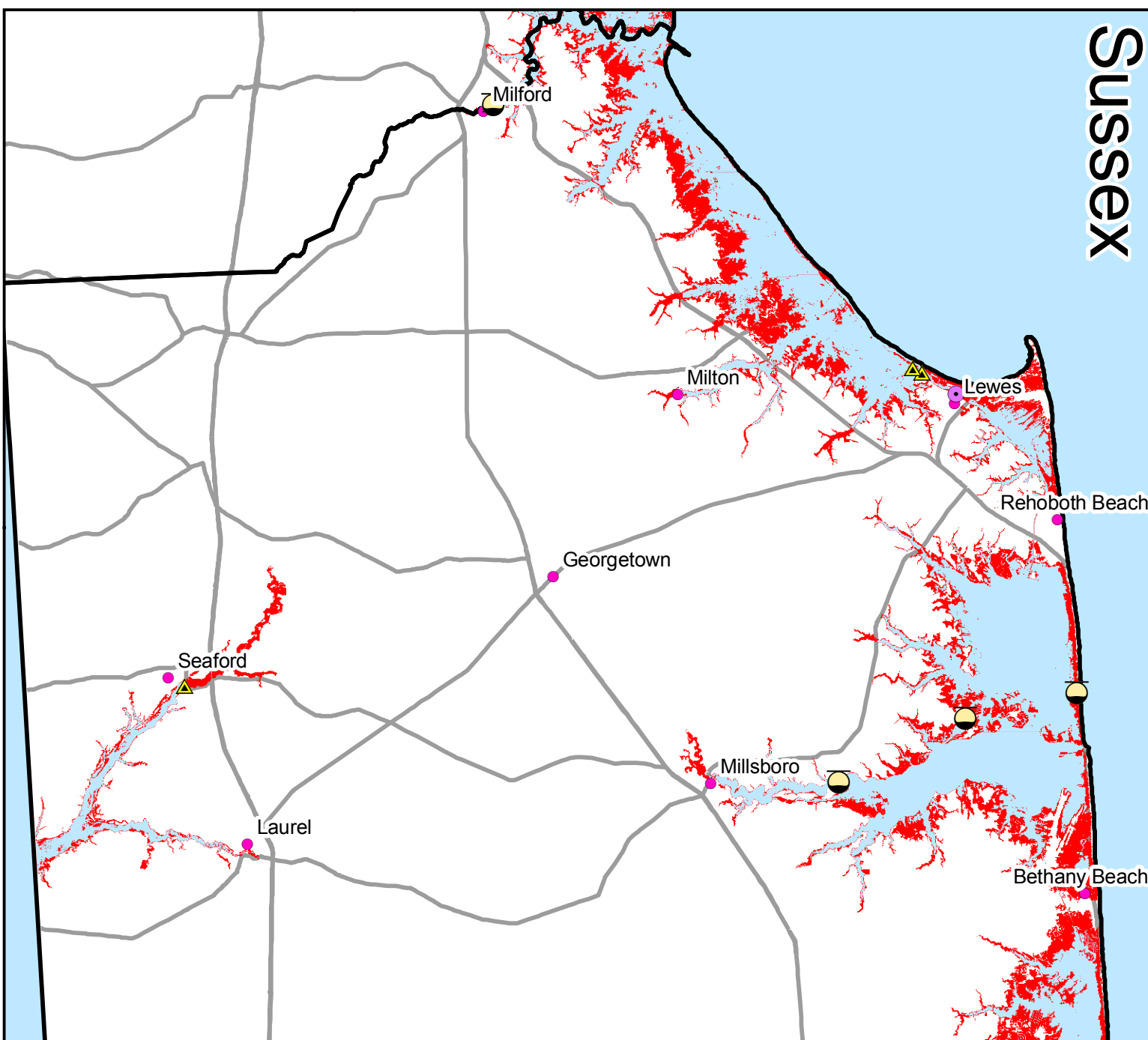
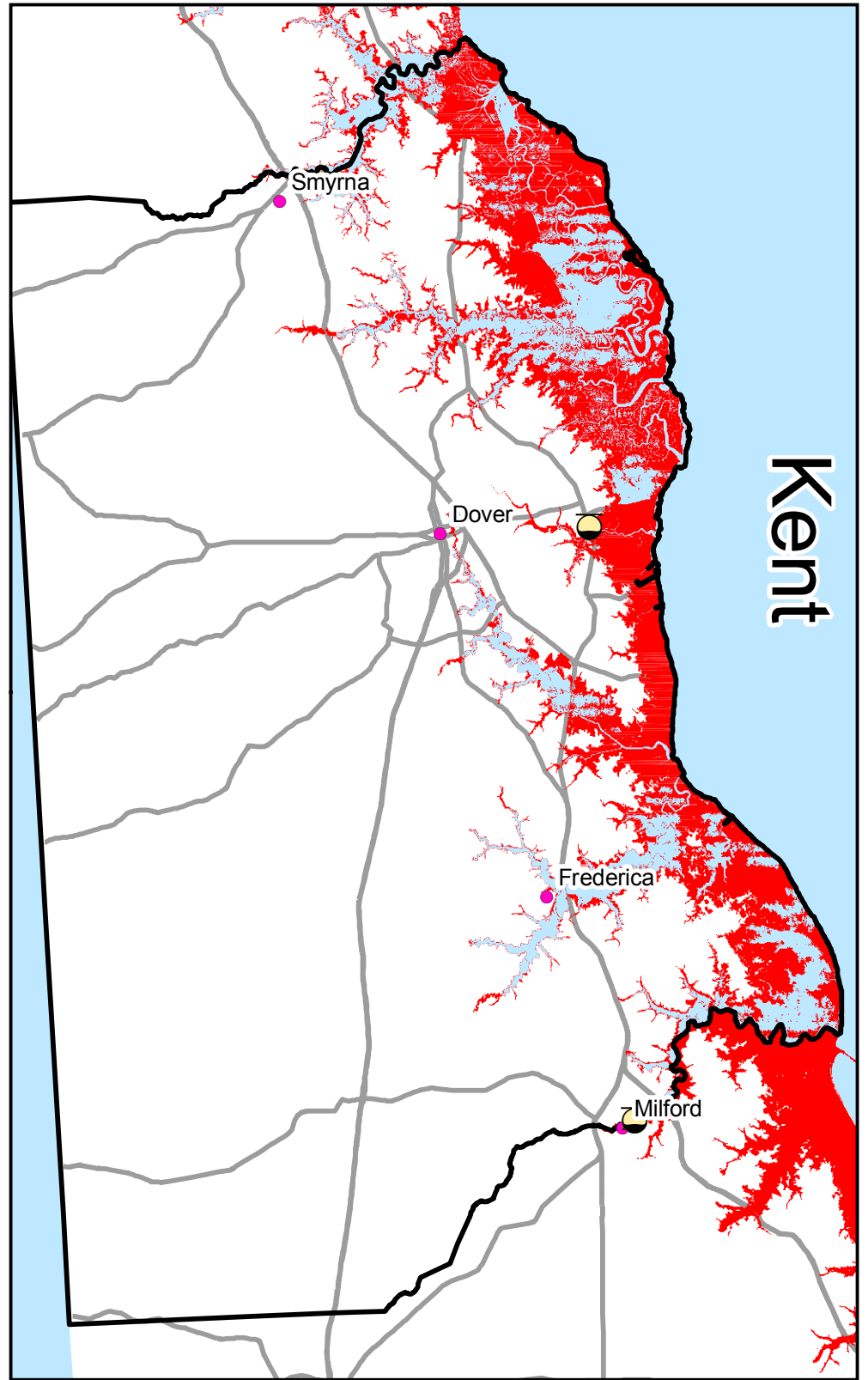
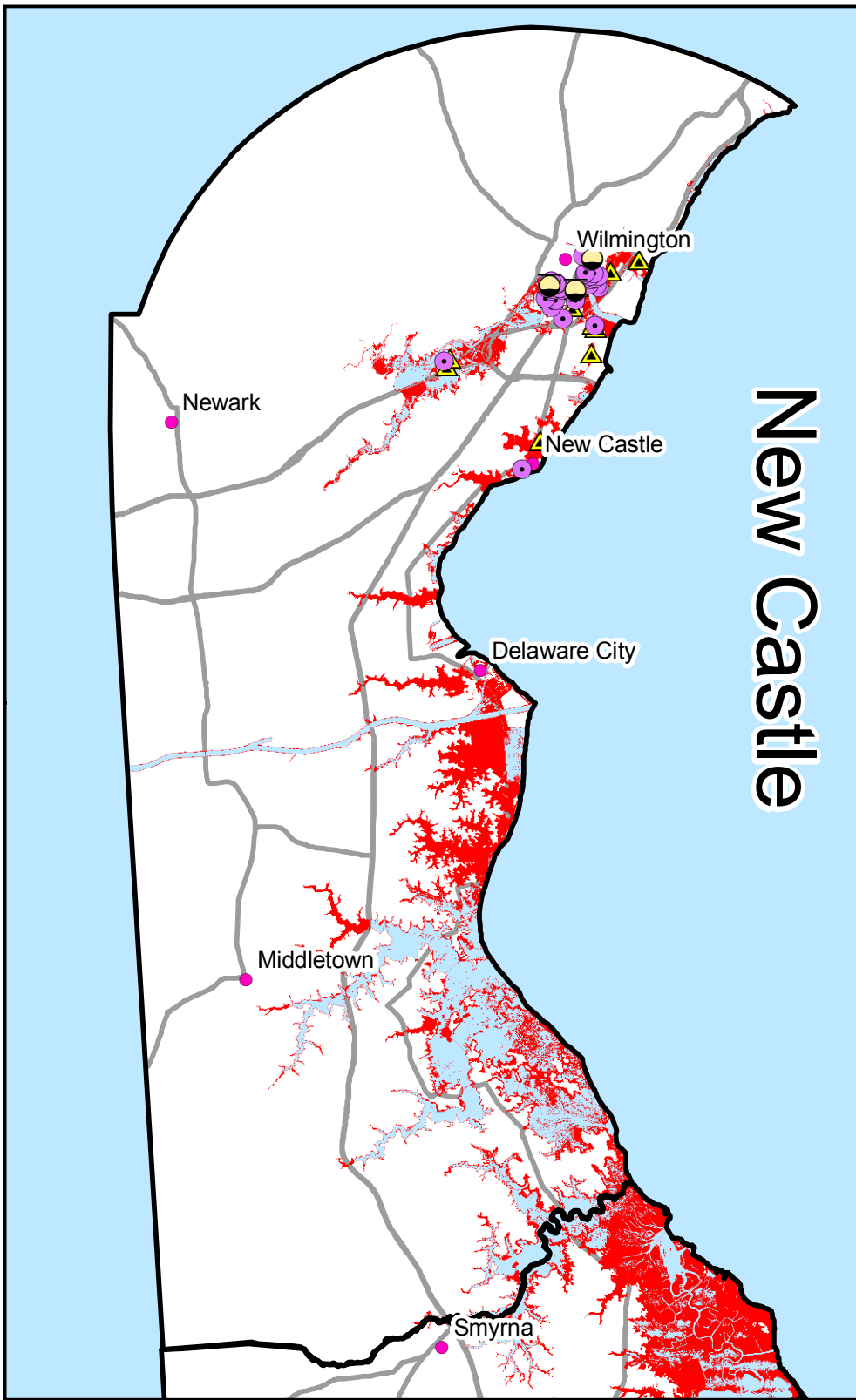


Hazardous Sites Inundated with 1.5 Meters of Sea Level Rise



Legend

- Leaking Underground Storage Tanks at 1.5m SLR
- Brownfield Sites Inundated at 1.5m SLR
- Hazardous Waste Generator Inundated at 1.5m
- Major Roads
- Major Cities
- Mean Higher High Water
- 1.5m Sea Level Rise