

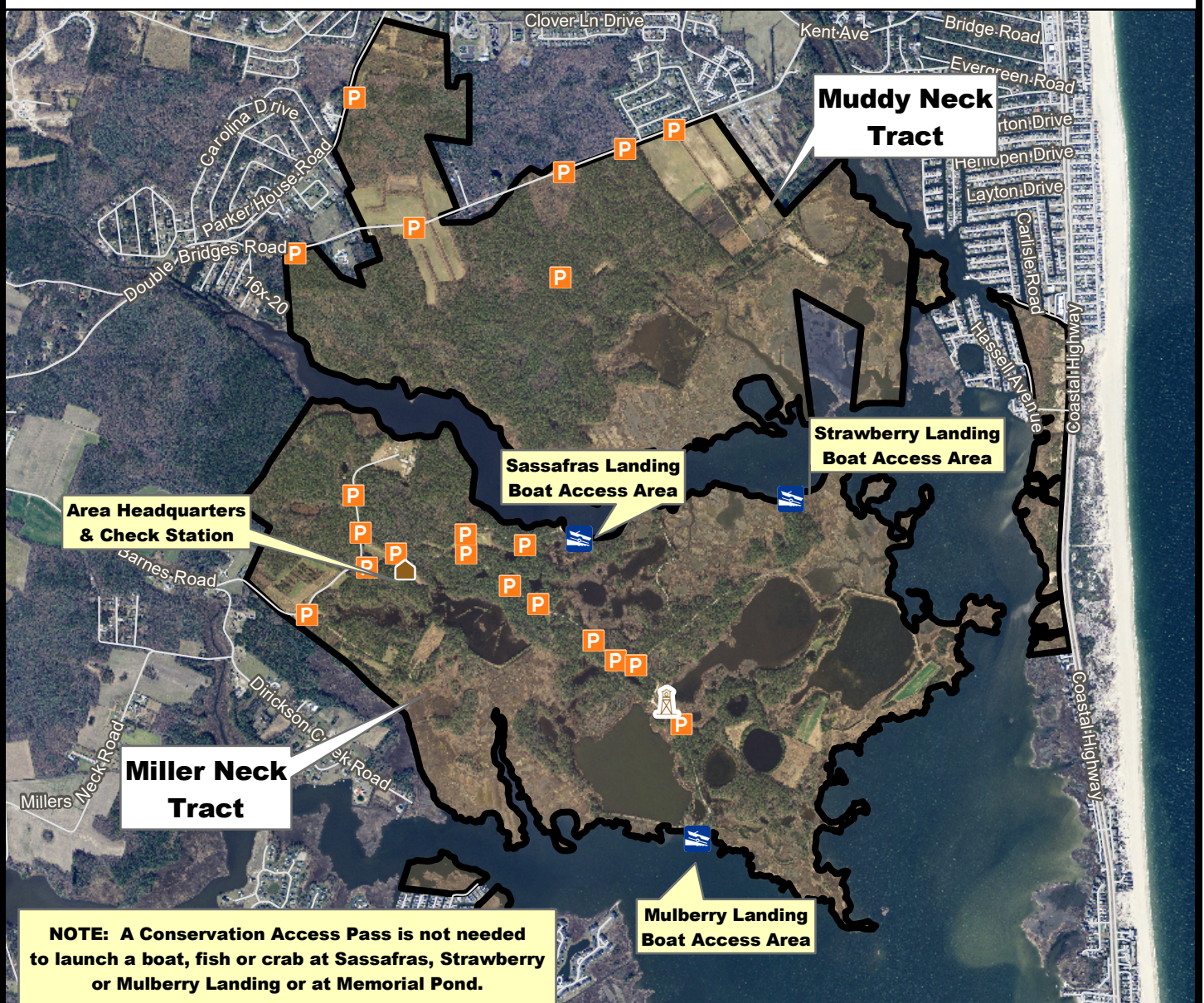
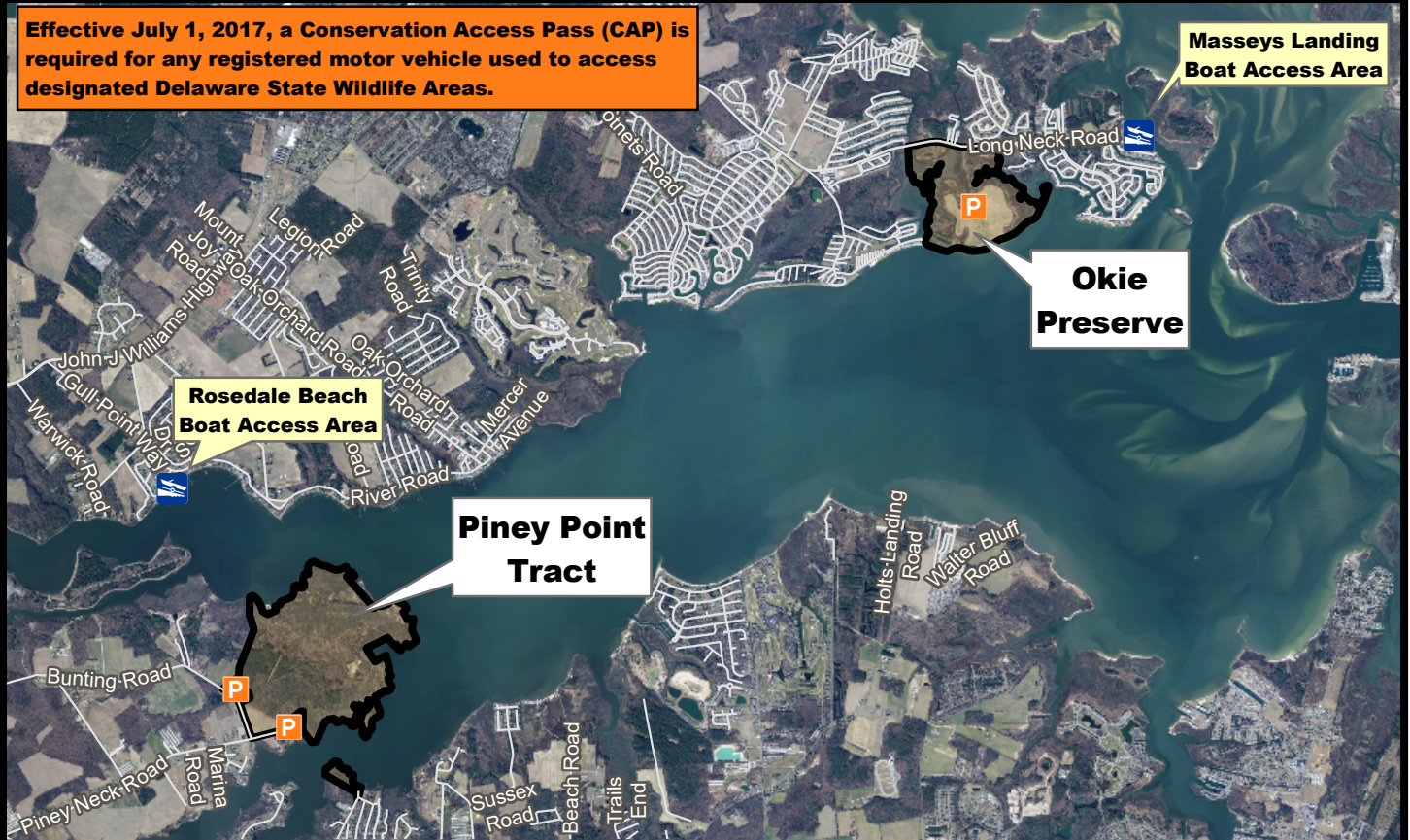


# ASSAWOMAN WILDLIFE AREA

*We Bring You Delaware's Great Outdoors  
through Science and Service*



Effective July 1, 2017, a Conservation Access Pass (CAP) is required for any registered motor vehicle used to access designated Delaware State Wildlife Areas.



**NOTE: A Conservation Access Pass is not needed to launch a boat, fish or crab at Sassafra, Strawberry or Mulberry Landing or at Memorial Pond.**



Wildlife Area



CAP Exempt



CAP Exempt



Viewing Tower



CAP Required



CAP Required



Building



THE BOUNDARIES SHOWN  
ON THIS MAP ARE  
APPROXIMATE  
AND ARE ONLY TO BE  
USED AS A GUIDE.