

# AUGUSTINE WILDLIFE AREA

(2,667 ACRES)

## GREEN TRACT DEER/UPLAND



WILDLIFE AREA



STATE ROAD



DESIGNATED PARKING AREA



ESTABLISHED DIRT ROAD



DEER STAND

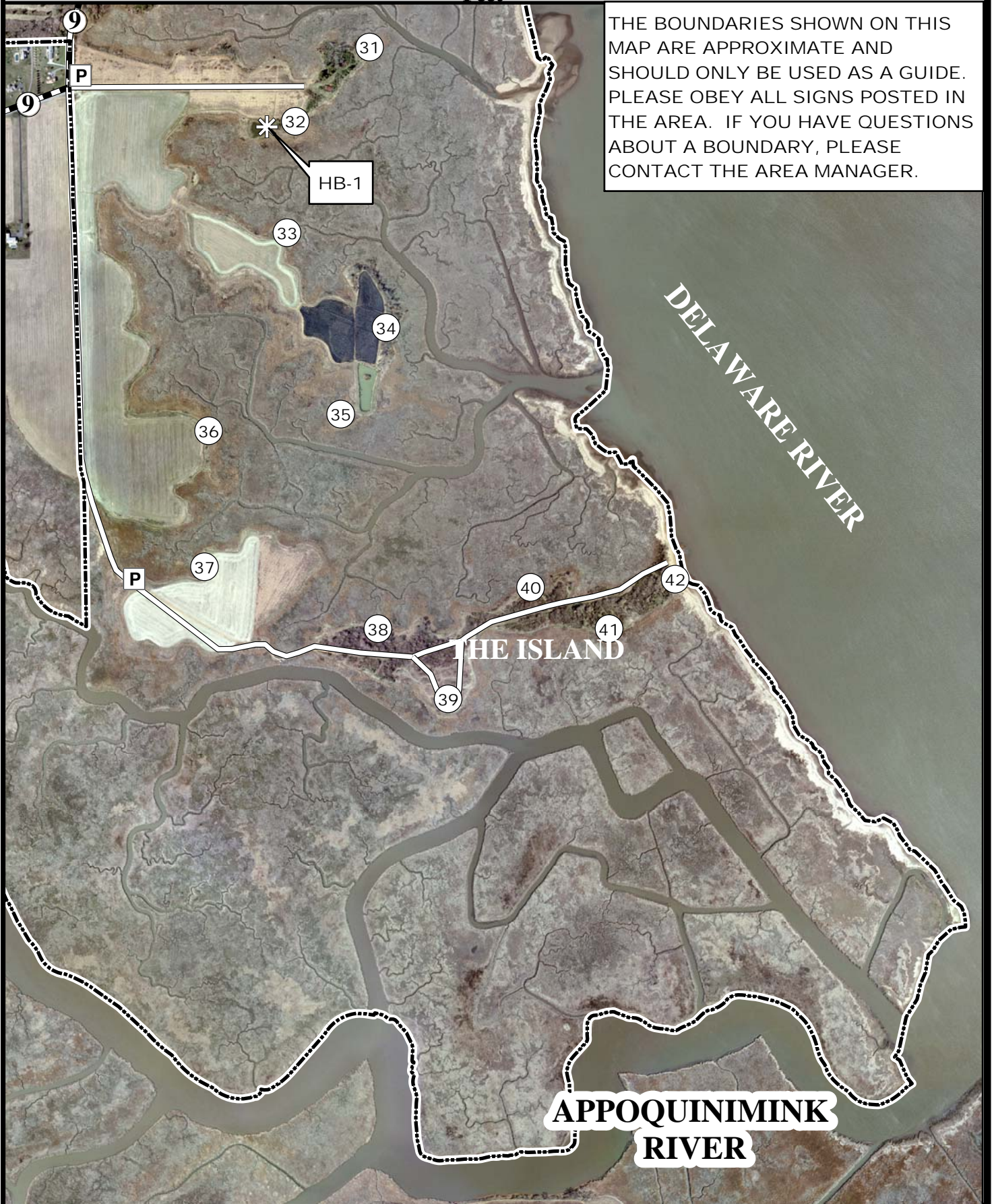


HANDICAPPED BLIND

0 1,000 2,000

Feet

THE BOUNDARIES SHOWN ON THIS MAP ARE APPROXIMATE AND SHOULD ONLY BE USED AS A GUIDE. PLEASE OBEY ALL SIGNS POSTED IN THE AREA. IF YOU HAVE QUESTIONS ABOUT A BOUNDARY, PLEASE CONTACT THE AREA MANAGER.



2011-2012  
AUGUSTINE WILDLIFE AREA  
Green Tract

**DEER & UPLAND HUNTING**

Persons may hunt on the Augustine Wildlife Area only as directed by the following rules, which have been established by Wildlife Regulations 3908 (WR-3908) of the Division of Fish and Wildlife, pursuant to Section 103, 7 Delaware Code. Violators of wildlife area regulations may be subject to fines and or revocation of their hunting privileges on state wildlife areas for up to one year.

**PERSONS UNDER THE INFLUENCE OF ALCOHOLIC BEVERAGES OR DRUGS OR POSSESSING OR CONSUMING ALCOHOLIC BEVERAGES OR DRUGS SHALL NOT BE PERMITTED TO HUNT AND/OR POSSESS FIREARMS ON DIVISION LANDS.**

**PERMITS**

**A STAND/BLIND PERMIT IS REQUIRED TO HUNT DURING ALL DEER FIREARMS SEASONS**

**A. DEER - FIREARM - SHOTGUN, MUZZLELOADER, HANDGUN BY PERMIT ONLY**

1. Permits issued via daily lottery drawing at the Augustine Lottery Station.
2. Daily permits issued 1 1/2 hours before legal shooting time. Vacant stands will then be re-issued by a second lottery at 12:00 PM. No permits issued after 1:00 PM
3. Deer hunting in this area will not be permitted during the Special October Antlerless Firearm Season. Archery hunting will be permitted; however, archers must wear required hunter orange.
4. Handguns may be used in place of shotgun during any deer season when a shotgun is legal.
5. Only one firearm is permitted/deer stand.
6. Failure to accurately report harvest and return permit will yield loss of hunting privileges.
7. Deer hunters must park in appropriate parking lots (see maps) and go directly to their stands.
8. Hunters may not "drive" deer and must hunt from state-built stands.
9. Handgun deer hunting will not be allowed on the Green Tract during the January handgun season.

**B. DEER - ARCHERY**

1. Except during firearm seasons, archery hunters may hunt anywhere within the Green Tract (excluding refuges and safety zones) without special permits, but must park in official lots only (see maps).
2. Archery hunters may use portable stands however all parts of portable stands must be removed at the end of the day. No stands or tree steps which cause damage to trees are allowed.
3. **Archery hunting is permitted on the Green Tract during the youth deer hunt, however wearing hunter orange is required.**

**C. DEER - DISABLED HUNTING**

A disabled deer hunting location (HB 1) is available for non-ambulatory hunters (see map). For opening day reservations, call 834-8433 at least 1 week prior to the season. For more information on disabled hunting opportunities, see the Delaware Hunting Guide.

**D. UPLAND HUNTING**

1. Upland small game hunting is permitted in season without a permit, except during the December and January shotgun deer seasons when upland small game hunting is closed.
2. During the month of September, ALL dove hunting on State Wildlife Areas will require the use of non-toxic shot.
3. No hunting is permitted within posted safety zones and refuges.
4. Raccoon hunting is permitted on the Green Tract from Sept.1 - Mar. 31 during legal raccoon hunting seasons.
5. Fox hunting in season while hunting other game species per these map regulations. No fox chasing permitted during any deer firearm season.
6. Falconry seasons and regulations are the same as upland small game hunting.
7. Rabbit dogs may be trained on Sundays during September, October, and November except for the Sunday during November shotgun deer season.



David E. Saveikis, Director

For further information, contact the Division of Fish and Wildlife, Dover, Delaware 19901, (Telephone 739-9912), the Augustine Wildlife Area (834-8433), or the Augustine Lottery Station (836-7294).

**To report wildlife or wildlife area violations, or to contact an enforcement agent call the Department Communication Center toll free at 1-800-523-3336.**

State and Federal law prohibit discrimination on the basis of race, color, national origin, age, sex, religion and/or handicap or disability. If you believe you have been discriminated against in any program, activity, or facility, or if you desire further information, please write to:

Office for Equal Opportunity  
U. S. Department of Interior  
Washington, D.C. 20240

OR

Division of Fish and Wildlife  
89 Kings Highway  
Dover, Delaware 19901

Federal Aid Project W-5-D