

AUGUSTINE WILDLIFE AREA

(2,667 ACRES)

GREEN TRACT WATERFOWL



WILDLIFE AREA



DESIGNATED PARKING AREA



ESTABLISHED DIRT ROAD



STATE ROAD



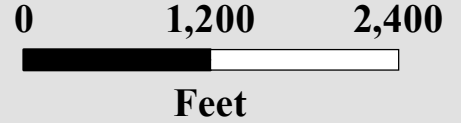
DUCK BLIND



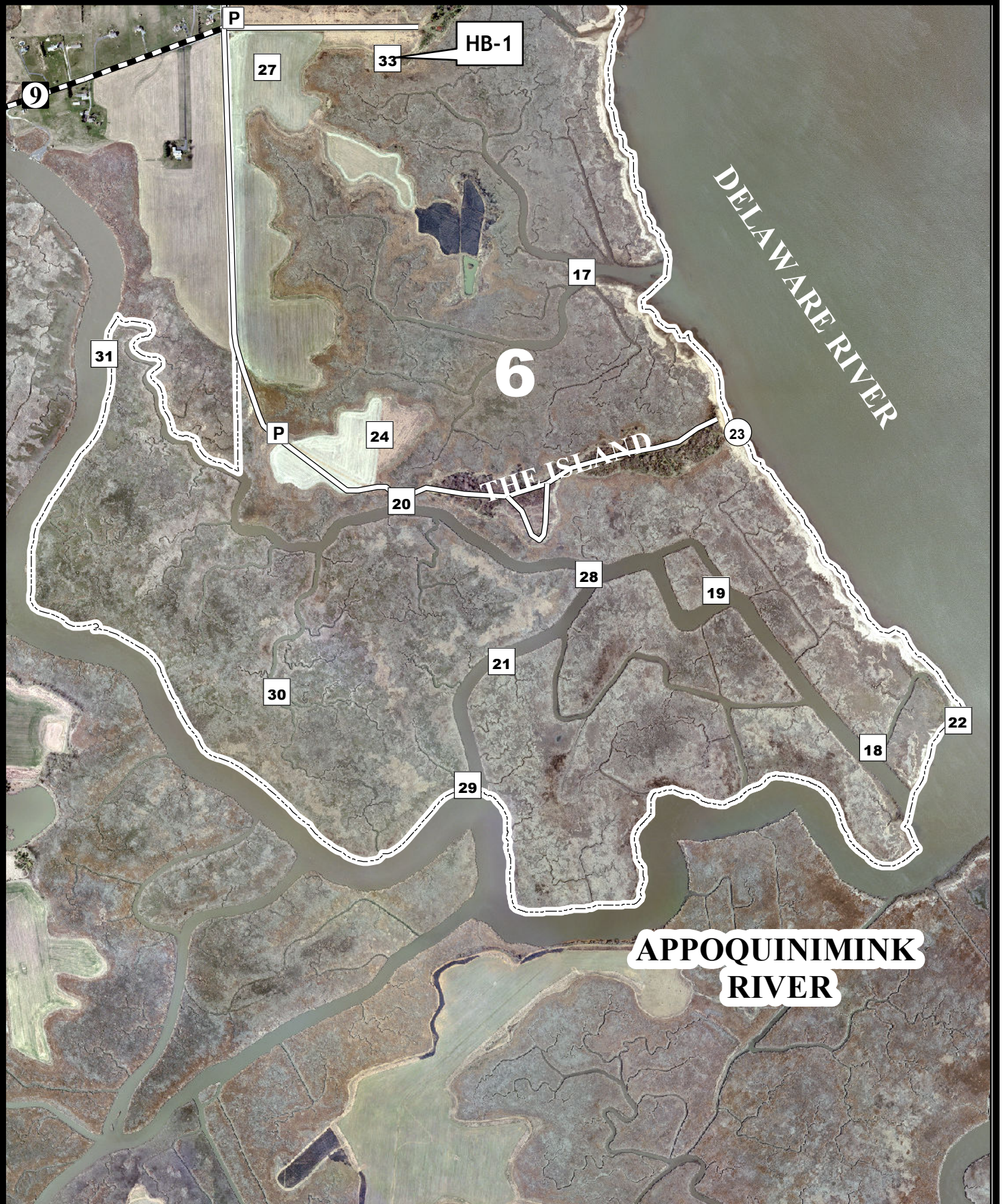
HANDICAPPED BLIND



BLIND SITE



THE BOUNDARIES SHOWN ON THIS MAP ARE APPROXIMATE AND ARE ONLY TO BE USED AS A GUIDE. PLEASE OBEY ALL SIGNS POSTED IN THE AREA. IF YOU HAVE ANY QUESTIONS ABOUT A BOUNDARY, PLEASE CONTACT THE AREA MANAGER



2011-2012
AUGUSTINE WILDLIFE AREA
Green Tract

WATERFOWL

Persons may hunt on the Augustine Wildlife Area only as directed by these rules, which have been established by Wildlife Regulation 3908 of the Division of Fish and Wildlife, pursuant to Section 103, 7 Delaware Code. Violators of wildlife area regulations may be subject to fines and or revocation of their hunting privileges on state wildlife areas for up to one year.

PERSONS UNDER THE INFLUENCE OF ALCOHOLIC BEVERAGES OR DRUGS OR POSSESSING OR CONSUMING ALCOHOLIC BEVERAGES OR DRUGS SHALL NOT BE PERMITTED TO HUNT AND/OR POSSESS FIREARMS ON DIVISION LANDS.

PERMITS

A STAND/BLIND PERMIT IS REQUIRED TO HUNT DURING ALL DEER FIREARMS AND WATERFOWL SEASONS.

A. WATERFOWL HUNTING REGULATIONS

1. Hunting by permit only, issued by a daily lottery held at the Augustine Lottery Station. See Lottery Station Attendant for lottery application details.
2. **Permits are issued from 1 1/2 hours before legal shooting time until 1:00 P.M.**
3. Hunting days and Hours: **Opening days, Mondays, Wednesdays, Fridays, Saturdays, and Thanksgiving during the regular waterfowl seasons from ½ hour before sunrise until sunset.** NOTE: Area may be closed during the early and late snow goose seasons, and hunting days and hours may differ during the September Teal Season. To assure the area is open, please call the Augustine Wildlife Area at 834-8433 or the Dover Office at 739-9912.
4. All hunting from state-built pits, blinds, and blind sites only (locations on maps).
5. No more than 3 persons may occupy one pit or blind.
6. Park in appropriate parking lots (see maps). Do not drive into fields.
7. Failure to accurately report harvest and return permits to the lottery station or drop boxes will result in loss of hunting privileges.
8. No airboats.
9. No waterfowl hunting from upland fields, except from designated goose blinds.
10. Hunters using duck blinds in the tide marsh must have a boat and required safety equipment to hunt. See Delaware Hunting and Trapping Guide for regulations.
11. Hunters must vacate all hunting areas by one hour after sunset.
12. This area will be open during the Snow Goose Conservation Order. See official seasons and regulations as published in the 2011-2012 Delaware Migratory Game Bird Season Summary. **Snow goose hunting permits during the late season will be issued via self-registration at the appropriate sign-in board.**

B. DISABLED HUNTING

A disabled waterfowl hunting location (HB 1) is available for non-ambulatory hunters (see map). For opening day reservations, call 834-8433 at least 1 week prior to the season. For more information on disabled hunting opportunities, see the Delaware Hunting Guide.

C. FIREARMS

No firearms on Division lands from March 1 - August 31 except by permit during legal hunting seasons authorized by the Division of Fish and Wildlife. Target shooting is prohibited.



David E. Saveikis, Director

For further information, contact the Division of Fish and Wildlife, Dover, Delaware 19901 (Telephone: 739-9912), the Augustine Wildlife Area (834-8433), or the Augustine Lottery Station (836-7294).

To report wildlife or wildlife area violations, or to contact an enforcement agent call the Department Communication Center toll free at 1-800-523-3336.

State and Federal law prohibit discrimination on the basis of race, color, national origin, age, sex, religion and/or handicap or disability. If you believe you have been discriminated against in any program, activity or facility, or if you desire further information, please write to:

Office for Equal Opportunity
U. S. Department of Interior
Washington, D.C. 20240

OR

Division of Fish and Wildlife
89 Kings Highway
Dover, DE 19901

Federal Aid Project W-5-D