

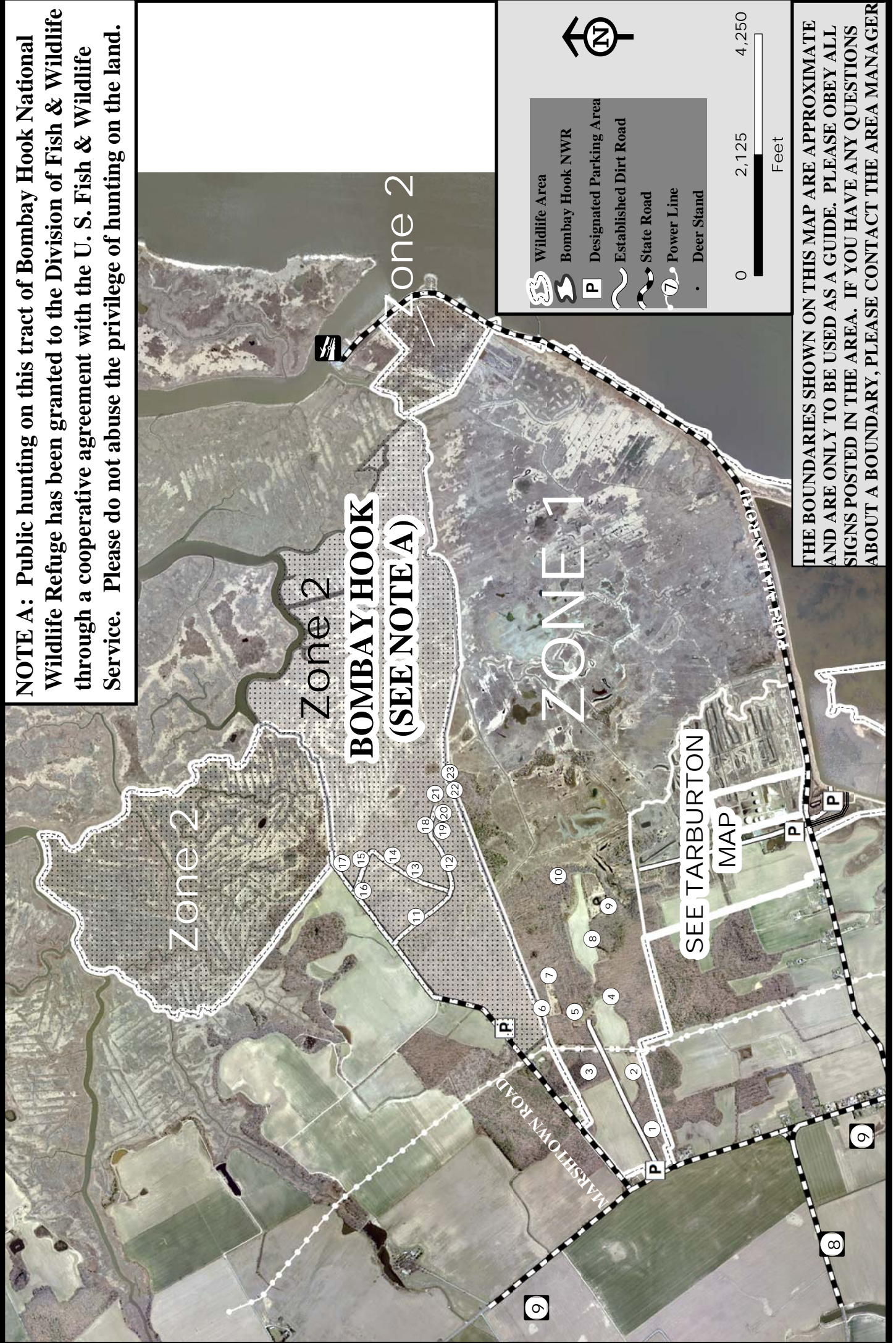
LITTLE CREEK WILDLIFE AREA

(4,781 ACRES)

DAVEY CROCKETT TRACT



NOTE A: Public hunting on this tract of Bombay Hook National Wildlife Refuge has been granted to the Division of Fish & Wildlife through a cooperative agreement with the U. S. Fish & Wildlife Service. Please do not abuse the privilege of hunting on the land.



- Wildlife Area
- Bombay Hook NWR
- Designated Parking Area
- Established Dirt Road
- State Road
- Power Line
- Deer Stand

0 2,125 4,250
 Feet

THE BOUNDARIES SHOWN ON THIS MAP ARE APPROXIMATE AND ARE ONLY TO BE USED AS A GUIDE. PLEASE OBEY ALL SIGNS POSTED IN THE AREA. IF YOU HAVE ANY QUESTIONS ABOUT A BOUNDARY, PLEASE CONTACT THE AREA MANAGER

2011-2012
LITTLE CREEK WILDLIFE AREA (State of Delaware)
DAVEY CROCKETT TRACT (Bombay Hook National Wildlife Refuge)

Persons may hunt on the Woodland Beach Wildlife Area - McKay Tract and Lighthouse Island only as directed by the above rules, which have been established by Regulation 3908 of the Division of Fish and Wildlife, pursuant to Section 103, 7 Delaware Code. **Violators of wildlife area regulations may be subject to fines and/or revocation of their hunting privilege on state wildlife areas for up to one year. All National Wildlife Refuge regulations apply to the Davey Crockett Area)**

FIREARMS DEER HUNTING BY PERMIT ONLY. AN ANNUAL STAND/BLIND PERMIT MUST BE SHOWN BY EACH HUNTER PRIOR TO OBTAINING A DAILY PERMIT DURING ALL DEER FIREARMS AND SEASONS (except for deer stands 11-23). FIREARMS DEER HUNTING RESTRICTED TO HUNTING FROM STATE BUILT STANDS ONLY.

A. DEER - GENERAL

DEER HUNTING WILL NOT BE OPEN DURING THE SPECIAL OCTOBER ANTLERLESS FIREARMS SEASONS.

1. Deer hunting during firearm seasons on the Davey Crockett Tract will be by permit only. All deer hunters will check in at the Little Creek Checking Station before hunting.
2. For the muzzleloader and shotgun seasons a daily lottery will be held at the checking station 1 1/2 hours before legal shooting time and at 12:00 Noon. Hunters are advised to arrive at least 15 minutes prior to the lottery.
3. All permits must be returned to the checking station at the end of the days hunt. All hunting from state-built deer stands only (as marked on map) except archery (see B3).
4. Use or possession of alcohol is prohibited.

B. DEER - ARCHERY & CROSSBOW.

1. Except for firearms seasons, hunters on the Davey Crockett Tract must register for a zone at the tagboard at the parking lots. Hunters may hunt anywhere within the zone except the safety zones.
2. Hunters must place tags on empty hooks when registering for zones and sign the registration sheet. If no empty hooks are available, the zone is full. Hunters must remove tags when leaving the area. Zone availability is first come, first serve.
3. Except for firearms seasons, hunters may use state-built stands, hunt from the ground or portable stands. No permanent stands may be built and all parts of a portable stand must be removed by the end of the days hunt. No nailed or screw-in tree steps allowed.
4. Archery hunting is closed during the Special Youth Hunt. During firearms seasons, hunters must register for lottery and hunt only from state-built stands.

C. DEER - FIREARMS

1. Deer hunting with muzzleloader and shotgun during the all seasons (including Special Youth Hunt) by permit will be open on all days. Permits will be issued at the Little Creek checking station. (See A2). **A handgun may be used in place of a shotgun for deer hunting during any shotgun season when a shotgun is a legal weapon. Closed during January handgun season.**

D. UPLAND GAME HUNTING

- 1) Hunters may take small game in season. Use care to stay on state and federal lands - do not trespass onto private lands. Small game hunting closed during the December and January shotgun deer seasons. **DURING THE MONTH OF SEPTEMBER, ALL DOVE HUNTING ON STATE WILDLIFE AREAS WILL REQUIRE THE USE OF NON-TOXIC SHOT.**
- 2) Upland hunters may not take or attempt to take waterfowl.
- 3) Hunting within the safety zone of residences is prohibited. This law will be strictly enforced.
- 4) Raccoon hunting is open from September 1 until March 31 during legal raccoon hunting seasons.
- 5) Turkey hunting is allowed on entire area by permit only. (See Delaware Hunting & Trapping Guide for permit application.)
- 6) **FOX CHASING AND HUNTING** - Fox chasing allowed in season but is prohibited until 1:00 P.M. during turkey hunting season. **Fox hunting allowed in season while hunting other game species per these map regulations.**
- 7) **DOG TRAINING** - Rabbit dogs may be trained on Sundays during September, October, and November except for the Sunday during shotgun deer season.

E. WATERFOWL HUNTING

Hunters may take waterfowl by any legal means (jump shooting etc). Waterfowl hunting is permitted in the agricultural fields in season except during firearms deer seasons. Special regulations will apply during the Snow Goose Conservation Order starting February 1.

F. FIREARMS

Persons possessing, transporting, or carrying firearms on National Wildlife Refuges must comply with all provisions of state and local law. Persons may only use (discharge) firearms in accordance with refuge regulations (50 CFR 27.42 and specific refuge regulations in 50 CFR Part 32).

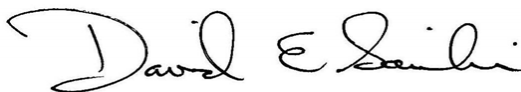
No firearms on Division lands from March 1 - August 31 except by permit during legal hunting seasons or Authorized by the Division of Fish and Wildlife. Target shooting is prohibited. Discharge or possession of paintball guns is prohibited. Call Ommelanden Shooting Range for year-round target shooting information at 323-5333.

G. HORSEBACK RIDING

Horses may be used only on established state-owned roads open to vehicular traffic.

H. VEHICLES off-established road use of motorized vehicles (including tax ditch right-of-ways) is unlawful without a permit. Parking only allowed at designated parking areas.

D. I. ALCOHOL. - Persons under the influence of alcohol beverages, liquors, or drugs or possessing and/or consuming alcoholic beverages, liquors, or drugs shall not be permitted to hunt and/or possess firearms on Division lands.



David E. Saveikas, Director

For further information, contact the Division of Fish and Wildlife, Dover, Delaware 19901 (telephone 284-1077, 739-9912 or Little Creek Checking Station 739-4610).

State and Federal law prohibit discrimination on the basis of race, color, national origin, age, sex, religion and/or handicap or disability. If you believe you have been discriminated against in any program, activity, or facility, or if you desire further information, please write to:

Office for Equal Opportunity	Division of Fish and Wildlife
U. S. Department of Interior	89 Kings Highway
Washington, D.C. 20240	Dover, Delaware 19901
	Federal Aid Project W-5-D