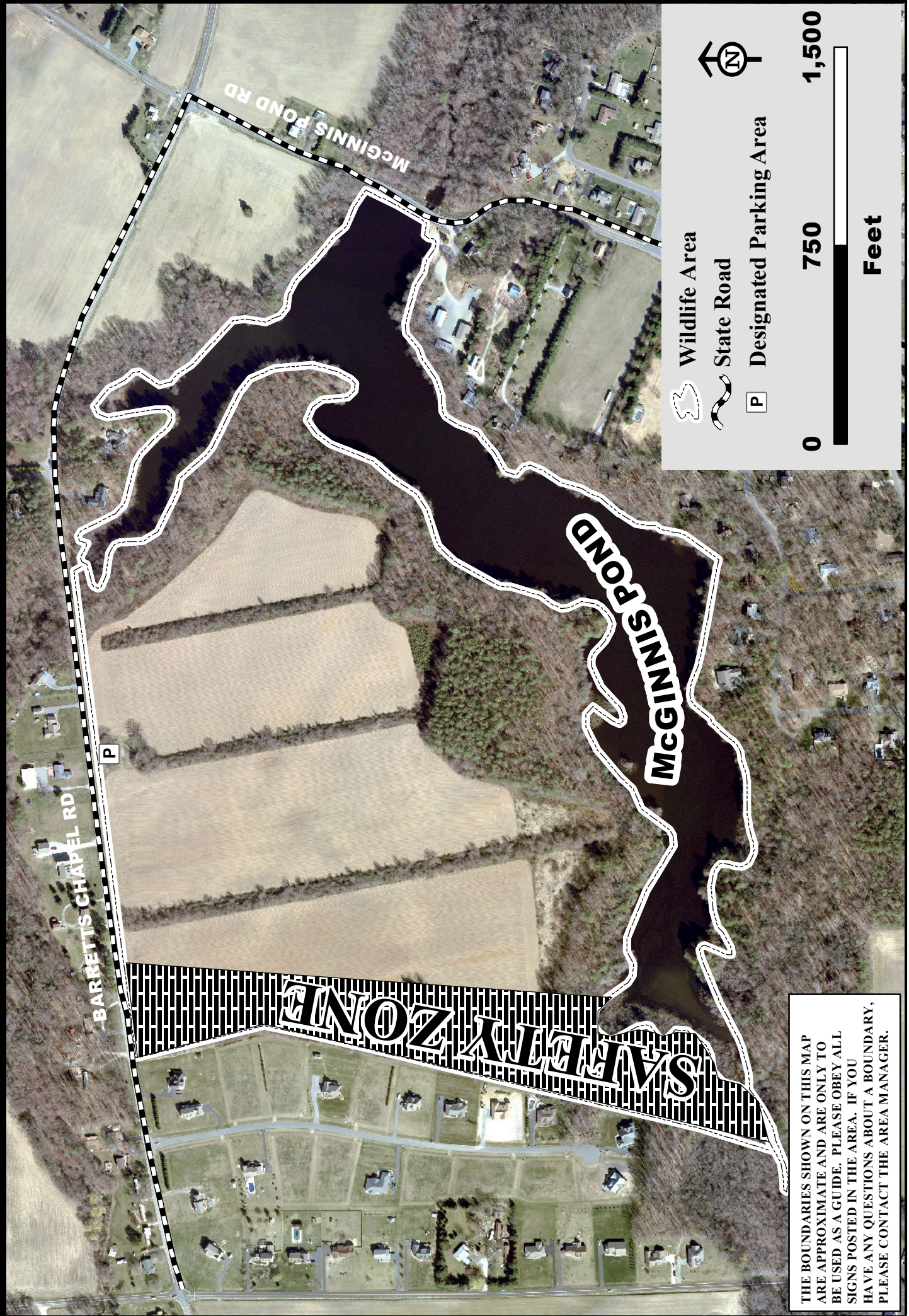


McGinnis Pond Wildlife Area

Archery & Crossbow Only



(96 ACRES)



THE BOUNDARIES SHOWN ON THIS MAP ARE APPROXIMATE AND ARE ONLY TO BE USED AS A GUIDE. PLEASE OBEY ALL SIGNS POSTED IN THE AREA. IF YOU HAVE ANY QUESTIONS ABOUT A BOUNDARY, PLEASE CONTACT THE AREA MANAGER.

**2011 - 2012
MCGINNIS POND WILDLIFE AREA
ARCHERY DEER HUNTING ONLY**

Persons may hunt on the McGinnis Pond Wildlife Area - only as directed by these rules, which have been established by Regulation 3908 of the Division of Fish and Wildlife, pursuant to Section 103, 7 Delaware Code. **Violators of wildlife area regulations may be subject to fines and/or revocation of their hunting privilege on state wildlife areas for up to one year.**

Persons may hunt on the McGinnis Pond Wildlife Area only as directed by these rules, which have been established by Regulation 3908 of the Division of Fish and Wildlife, pursuant to Section 103, 7 Delaware Code. **Violators of wildlife area regulations may be subject to fines and/or revocation of their hunting privilege on state wildlife areas for up to one year.**

- A. DEER HUNTING** – Hunting on this tract is restricted to deer hunting only by archery or crossbow or special mentored hunts as organized by the Division of Fish and Wildlife (youth or disabled). **Archery and crossbow hunters must wear the required hunter orange during firearms deer seasons.**
- B. TURKEY HUNTING** – Turkey hunting is not allowed on this area.
- C. FOX HUNTING** – Fox hunting allowed in season while hunting other game species per these map regulations.
- D. NO SMALL GAME, WATERFOWL, RACCOON, FIREARMS DEER HUNTING (except as mentioned above), OR FOX CHASING ALLOWED ON THIS TRACT.**
- E. DEER STANDS** – No permanent non-state built deer stands are allowed and all parts of a portable stand must be removed at the end of each hunting day. No screw-in tree stands or steps may be used.
- F. DOG TRAINING** – Rabbit dogs may be trained on Sundays during September, October, and November except for the Sunday during shotgun deer season.
- G. ALCOHOL.** - Persons under the influence of alcoholic beverages, liquors, or drugs or possessing and/or consuming alcoholic beverages, liquors, or drugs shall not be permitted to hunt and/or possess firearms on Division lands.

STATE WILDLIFE AREA USE REGULATIONS

- FIREARMS** - No firearms on Division land from March 1 - August 31 except by permit during legal hunting seasons or as authorized by the Division of Fish and Wildlife in writing. Target shooting is prohibited. Discharge or possession of paintball guns is prohibited.
- HUNTING** - Permitted only as designated on area maps.No trapping except by valid contract holders.
- VEHICLES** - Off-established road use of motorized vehicles (including tax ditch right-of-ways) is unlawful without a permit. Parking only allowed at designated parking areas.
Speed limit 20 m.p.h.
required. NO AIR BOATS.
- TRESPASS** - No entry into closed areas.
- HOURS** - Entry limited from sunrise to sunset except to lawfully hunt and fish.
- CAMPING/SWIMMING** - No unauthorized camping or swimming.
- DUMPING** - Dumping is strictly prohibited.
- HORSEBACK RIDING** - Horses may be used only on established roads open to vehicular traffic except for activities approved by the Division.



David E. Saveikas, Director

For further information, contact the Division of Fish and Wildlife, Dover, Delaware (telephone: 284-1077 or 739-9912).

State & Federal law prohibits discrimination on the basis of race, color, national origin, age, sex, religion and/or handicap or disability. If you believe you have been discriminated against in any program, activity, or facility or if you desire further information, please write to:

Office for Equal Opportunity
U. S. Department of Interior
Washington, D.C. 20240

Division of Fish & Wildlife
89 Kings Highway
Dover, DE 19901

Federal Aid Project W-5-D