

MILFORD NECK WILDLIFE AREA



(5,459 ACRES)



PENUUEL/COVERDALE TRACTS

Wildlife Area

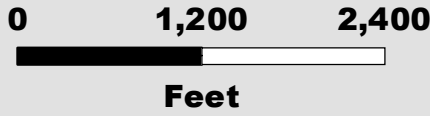
Refuge

Duck Blind Site

Established Dirt Road

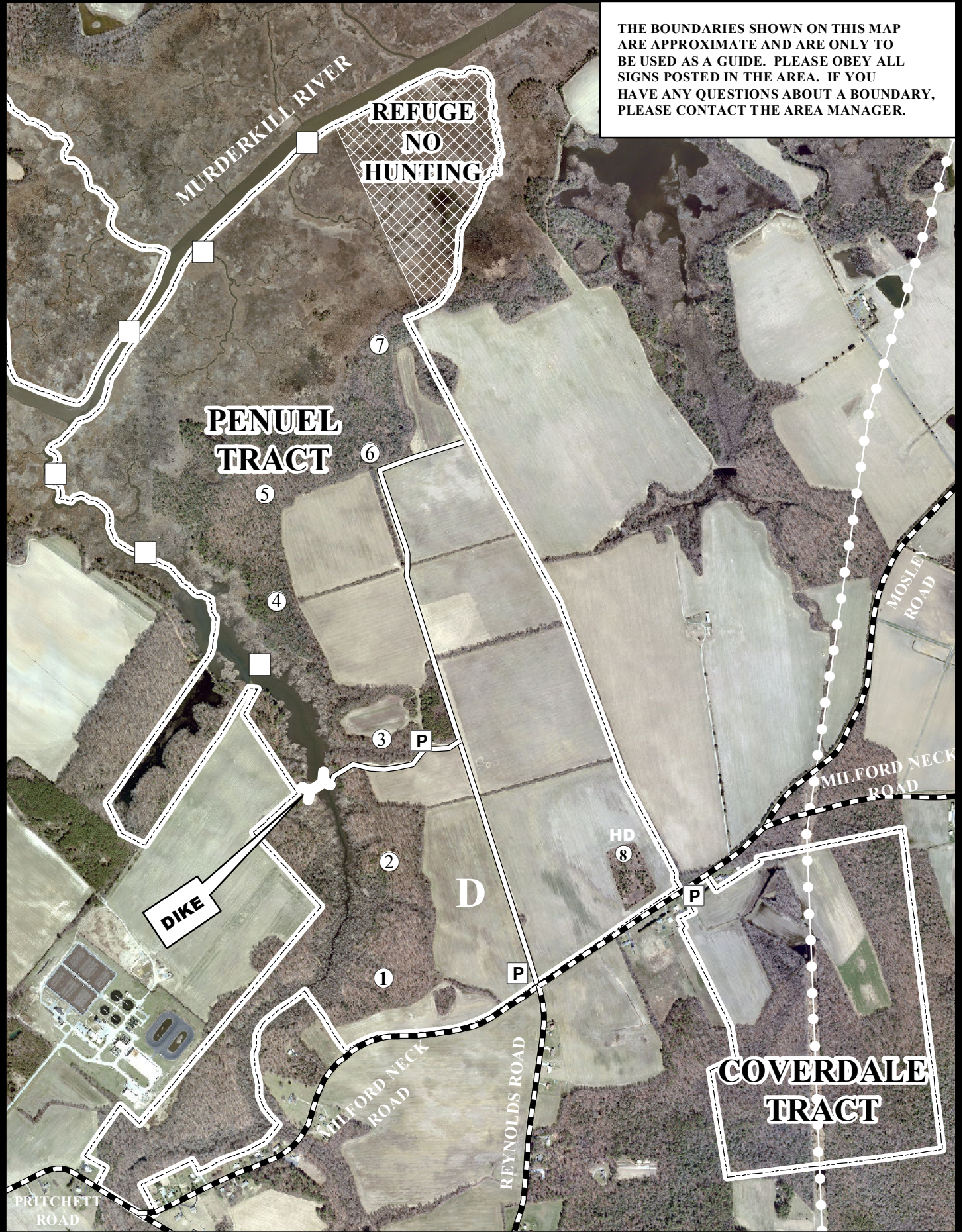
State Road

MAP 3



- D** Dove Field
- HD** Accessible Duck Blind
- HD 8** Accessible Deer Stand
- Powerline
- 1** Deer Stand
- P** Designated Parking Area

THE BOUNDARIES SHOWN ON THIS MAP ARE APPROXIMATE AND ARE ONLY TO BE USED AS A GUIDE. PLEASE OBEY ALL SIGNS POSTED IN THE AREA. IF YOU HAVE ANY QUESTIONS ABOUT A BOUNDARY, PLEASE CONTACT THE AREA MANAGER.



2011 – 2012
MILFORD NECK WILDLIFE AREA
PENUEL AND COVERDALE TRACTS

Persons may hunt on the Milford Neck Wildlife Area-Penuel and Coverdale tracts only as directed by these rules, which have been established by Regulation 3908 of the Division of Fish and Wildlife, pursuant to Section 103, 7 Delaware Code.

Violators of wildlife area regulations may be subject to fines and/or revocation of their hunting privileges on state wildlife areas for up to one year.

Fox chasing allowed in season but is prohibited until 1:00 P.M. during turkey season. Fox hunting allowed in season while hunting other game species per these map regulations.

ALCOHOL. - Persons under the influence of alcoholic beverages, liquors, or drugs or possessing and/or consuming alcoholic beverages, liquors, or drugs shall not be permitted to hunt and/or possess firearms on Division lands.

DOG TRAINING – Rabbit dogs may be trained on both tracts on Sundays during September, October, and November except for the Sunday during shotgun deer season.

PENUEL TRACT

A. DEER, TURKEY, FOX & UPLAND GAME HUNTING

1. Hunting permitted in season, except for refuge located in the northeast corner of tract. Small game hunting open in season including during special October antlerless deer seasons and January handgun season.
2. Small game hunting **closed during the December and January deer shotgun seasons (Open during January muzzleloader season).**
3. Turkey hunters must possess a valid Milford Neck Wildlife Area turkey hunting permit.
4. No permanent deer stands may be built and no screw-in tree steps allowed. All parts of a portable stand must be removed at the end of the days hunt. Deer hunters must register at the tagboard located at the main parking lot. No one may register prior to 4:00 A.M. on the morning of the hunt.
5. Raccoon hunting is allowed from September 1 until March 31 during legal raccoon hunting seasons.
6. A handgun may be used in place of a shotgun for deer hunting during any deer shotgun season when a shotgun is a legal weapon. Handgun hunting for deer is permitted on this area during the January handgun season.

B. WATERFOWL HUNTING

1. Waterfowl hunting from blind sites **ONLY** on a first-come, first-served basis on Murderkill River and Beaver Dam Branch north of dirt bridge. See opposite side for locations. South of dirt bridge jump shooting permitted in branch.
2. Waterfowl hunting permitted in agricultural fields in season, except during firearm deer seasons. No hunting from hedgerow which serves as the eastern boundary of the property. Hunters may pick locations on a first-come, first-serve basis.
3. Special regulations will apply during the Snow Goose Conservation order starting February 1.

C. DOVE HUNTING

1. This area has fields planted with grain or sunflowers that are mowed prior to the season to attract doves. These areas are marked with a "D" on the front of the map. Pre-season scouting is advised. **Hunting will be permitted only on Opening day, Labor Day, Tuesdays, Thursdays, and Saturdays during September from 1:00 – 5:00 pm.** A lottery for the permits will be held at **12:00 Noon** on the above days at the **Little Creek Checking Station on Route 9.** Hunters are advised to arrive early to allow time for signing up. Dove hunting on this tract by permit only during September. Dove hunting allowed on the entire tract after September on a non-permit basis. **During the month of September, all dove hunting on state wildlife areas will require the use of non-toxic shot.**

COVERDALE TRACT

A. DEER, TURKEY & UPLAND GAME HUNTING

1. Small game and deer hunting permitted in season on the entire tract, except for safety zones around the residences.
2. Small game hunting **closed during the December and January deer shotgun seasons (open during January muzzleloader season).**
3. Turkey hunters must possess a valid Milford Neck Wildlife Area turkey hunting permit.
4. No permanent deer stands may be built and no screw-in tree steps allowed. All parts of a portable stand must be removed at the end of the days hunt.
5. All hunters must park in the designated parking lot located off of Milford Neck Road (CR120).
6. No raccoon or fox chasing/hunting is permitted.
7. Dove hunting allowed on entire tract on a non-permit basis.
8. A handgun may be used in place of a shotgun for deer hunting during any shotgun season when a shotgun is a legal weapon. Handgun hunting for deer is not permitted on this area during the January handgun seasons.

B. WATERFOWL HUNTING: NO WATERFOWL HUNTING ALLOWED ON THE COVERDALE TRACT

STATE WILDLIFE AREA USE REGULATIONS

FIREARMS

- No firearms on Division lands from March 1 – August 31 except by permit during legal hunting seasons or as authorized by the Division of Fish and Wildlife in writing. Target shooting is prohibited. Discharge or possession of paintball guns is prohibited.

HUNTING VEHICLES

- **Permitted only as designated on area maps.** No trapping except by valid contract holders.
- No off highway vehicles, either registered or unregistered are permitted. Speed limit is 20 m.p.h. No excessive noise; adequate mufflers are required. **Off established road use of motorized vehicles (including tax ditch right-of-ways) is unlawful without a permit. Parking only allowed at designated parking areas.**

TRESPASS

- **No entry into closed areas.**

HOURS

- Entry limited from **sunrise to sunset** except to lawfully hunt and fish.

CAMPING/SWIMMING


- No unauthorized camping or swimming

DUMPING

- Dumping is strictly prohibited.

HORSEBACK RIDING

- Horses may be used only on established roads open to vehicular traffic except for activities approved by the Division.



For further information, contact the Division of Fish and Wildlife, Dover, Delaware (Telephone 284-1077 or 739-9912)

State & Federal law prohibits discrimination on the basis of race, color, national origin, age, sex, religion and/or handicap or disability. If you believe you have been discriminated against in any program, activity or facility or if you desire further information, please write to:

Office of Equal Opportunity
U.S. Department of the Interior
Washington, D.C. 20240

Division of Fish & Wildlife
89 Kings Highway
Dover, DE 19901