

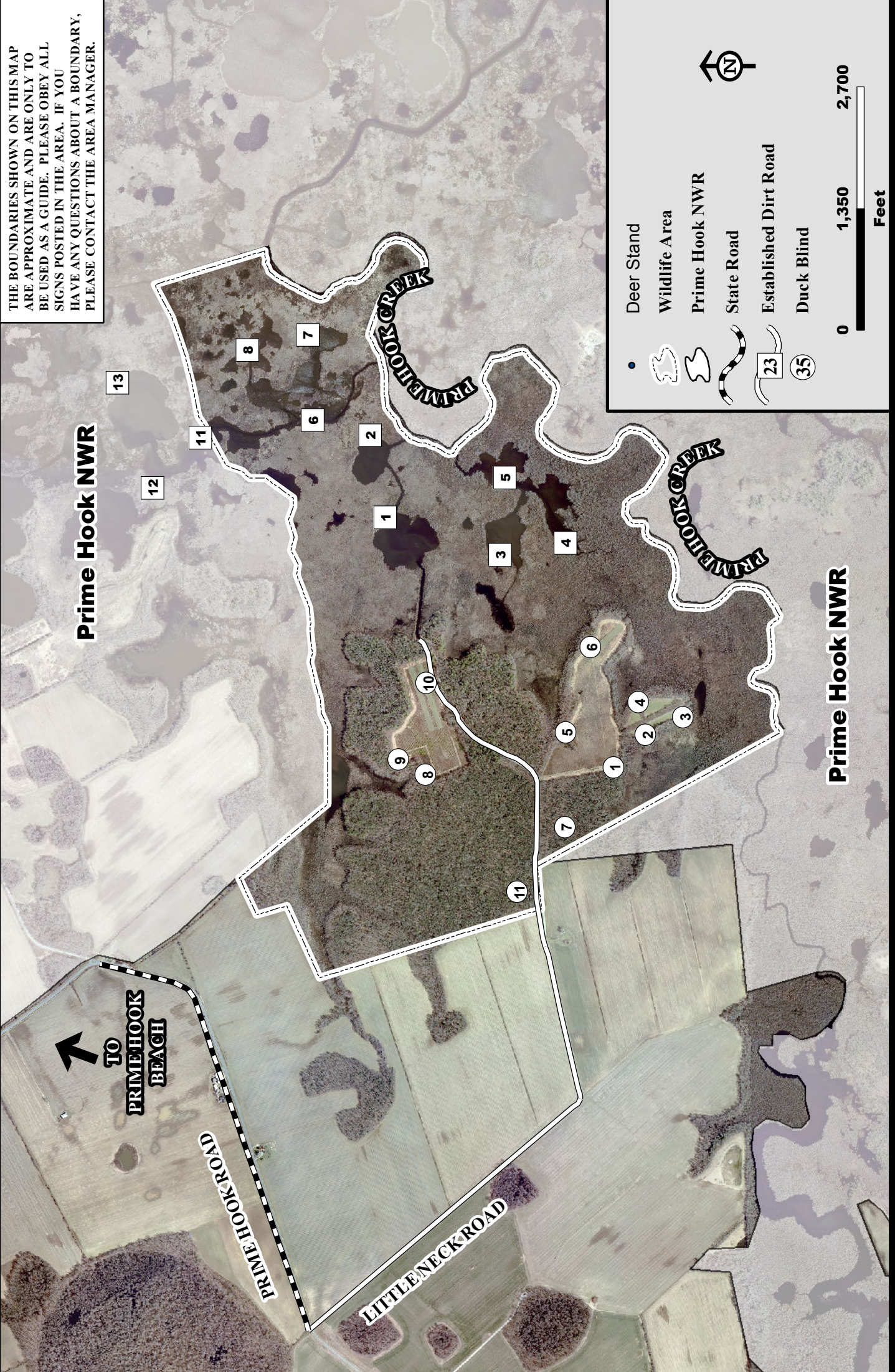
# PRIME HOOK WILDLIFE AREA



(698 ACRES)



THE BOUNDARIES SHOWN ON THIS MAP ARE APPROXIMATE AND ARE ONLY TO BE USED AS A GUIDE. PLEASE OBEY ALL SIGNS POSTED IN THE AREA. IF YOU HAVE ANY QUESTIONS ABOUT A BOUNDARY, PLEASE CONTACT THE AREA MANAGER.



Deer Stand  
 Wildlife Area  
 Prime Hook NWR  
 State Road  
 Established Dirt Road  
 Duck Blind

23  
 35

0 1,350 2,700 Feet

2011 - 2012

PRIME HOOK WILDLIFE AREA - HUNTING REGULATIONS

Persons may hunt on the Prime Hook Wildlife Area only as directed by these rules, which have been established by Regulation 25 of the Division of Fish and Wildlife, pursuant to Section 103, 7 Delaware Code. **Violators of wildlife area regulations may be subject to fines and/or revocation of their hunting privilege on state wildlife areas for up to one year.**

1. **NEW IN 2011 - A secondary disabled deer stand was added this year- #11. We will be open for early teal season this year in state blinds only.** The Snow Goose Conservation Order for hunting snow geese will remain in effect for the 2011- 12 season.

**A. WATERFOWL HUNTING.**

1. **Early Teal** - In 2011 state blinds will be open for the early teal season. Only state blinds will be open (1-8). State blinds for the early teal season will be checked out on a self-sign basis on-site only. Hunters will be asked to use the deer hunting tag board for duck blinds during the early teal season. Early teal season hunting hours are ½ hour before sunrise to sunset. **Hunt Days - Mondays, Wednesdays, Fridays, and Saturdays. Access to state blinds will be from state property only.** The checking station on Prime Hook National Wildlife Refuge will be closed for the early teal season.
2. **Regular Seasons** - **state/federal permit is required to hunt.** At Prime Hook, State and Federal waterfowl blinds are managed as one unit. The Federal blind user fee will also apply to state-owned blinds. Permits are issued on a lottery basis through the checking station on the Prime Hook National Wildlife Refuge. All federal wildlife refuges with hunting programs charge a daily user fee.
3. Prime Hook Wildlife Area is open for waterfowl hunting on any waterfowl hunting day scheduled at the Prime Hook National Wildlife Refuge (except early teal). These days are generally **Mondays, Wednesdays, Fridays, and Saturdays. Check with Federal personnel for actual hunting days (302-684-8419).**
4. All hunting will be from government-maintained blinds or blind sites only.
5. Permits will be issued 2 1/2 hours before sunrise and until 12:00 PM. Waterfowl hunting will stop at 3:00 PM. Hunters must be out by 4 p.m.
6. Permits will be surrendered at the checking station by 4:00 p.m. or upon leaving the area. Failure to accurately report harvest and return permits will result in the loss of area hunting privileges. A blank card will be interpreted as zero harvest.
7. No more than three (3) persons will occupy a blind.
8. Permits must be retained with the party at all times.
9. During the waterfowl-hunting season, no boats are allowed at access ramps or in impoundments without a waterfowl hunting permit.

**B. DEER HUNTING.**

1. Eleven deer stands are available on a first-come, first-served basis.
2. **Deer drives permitted from 9:00 A.M. to 3:00 P.M. by a maximum of 6 residents only.** Nonresidents may not participate in deer drives.
3. **No daily user fee or special permit.**
4. Portable deer stands may be used no closer than 100 yards from a permanent state stand. No permanent stands are allowed and all parts of a portable stand must be removed at the end of each hunting day. No screw-in tree steps or stands may be used because they cause damage to the tree.

**C. UPLAND HUNTING.**

**No special permits required, except to hunt wild turkey.** Properly licensed hunters, including falconers may hunt during any other open season.

1. Turkey hunters must obtain a permit to hunt on Prime Hook. Upland game hunting closed during all deer firearm seasons.
2. Fox hunting in season while hunting other game species per these regulations.
3. Fox chasing prohibited until 1 p.m. during the turkey season.
4. Raccoon hunting is permitted from September 1 - March 31 during legal raccoon hunting seasons.
5. Upland game hunters may not hunt waterfowl.
6. During the month of September, ALL dove hunting on State Wildlife Areas will require the use of non-toxic shot.
7. No daily user fee or special permit for upland hunting (except turkey hunters).

**D. TRAPPING.** No trapping except by valid contract holders. Trapping rights are awarded through competitive bids. Call 739-9912 or 539-3160 for bidding information.

**E. VEHICLES/BOATS.** No off-highway vehicles, either registered or unregistered, permitted. Motorized vehicles are only permitted on established and maintained roads.

**F. FIREARMS.** No firearms on Division lands from March 1 - August 31 during legal hunting seasons or as authorized by the Division of Fish and Wildlife. Target shooting is prohibited. Call Ommelanden Shooting Range for year-round target shooting information at 323-5333.

**G. HOURS.** Entry limited from sunrise to sunset except to lawfully hunt and fish.

**H. CAMPING, SWIMMING.** No unauthorized camping or swimming.

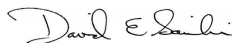
**I. HORSE RIDING.** Horses may be used only on established roads open to vehicular traffic except for activities approved by the Division.

**J. DUMPING.** Dumping is expressly prohibited. Violators will be prosecuted to the fullest extent of the law.

**K. ALCOHOL** - Persons under the influence of alcoholic beverages, liquors or drugs or possessing and/or consuming alcoholic beverages, liquors or drugs shall not be permitted to hunt and/or possess firearms on Division lands.

For further information, contact the Division of Fish and Wildlife, Dover, Delaware, 19901, (739-9912) or the Regional Office at the Assawoman Wildlife Area at (302) 539-3160.

PLEASE OBSERVE THE COURTESIES OF A GOOD SPORTSMAN  
HAVE A SAFE AND ENJOYABLE OUTING



David E. Saveikis, Director

State and Federal Law prohibit sex, religion and/or handicap or disability. If you believe you have been discriminated against in any discrimination on the basis of race, color, national origin, age, program, activity, or facility, or if you desire further information, please write to:

Office of Equal Opportunity      Division of Fish & Wildlife  
U. S. Department of Interior      89 Kings Highway  
Washington, D.C. 20240      Dover, DE 19901      Federal Aid Project W-5-D