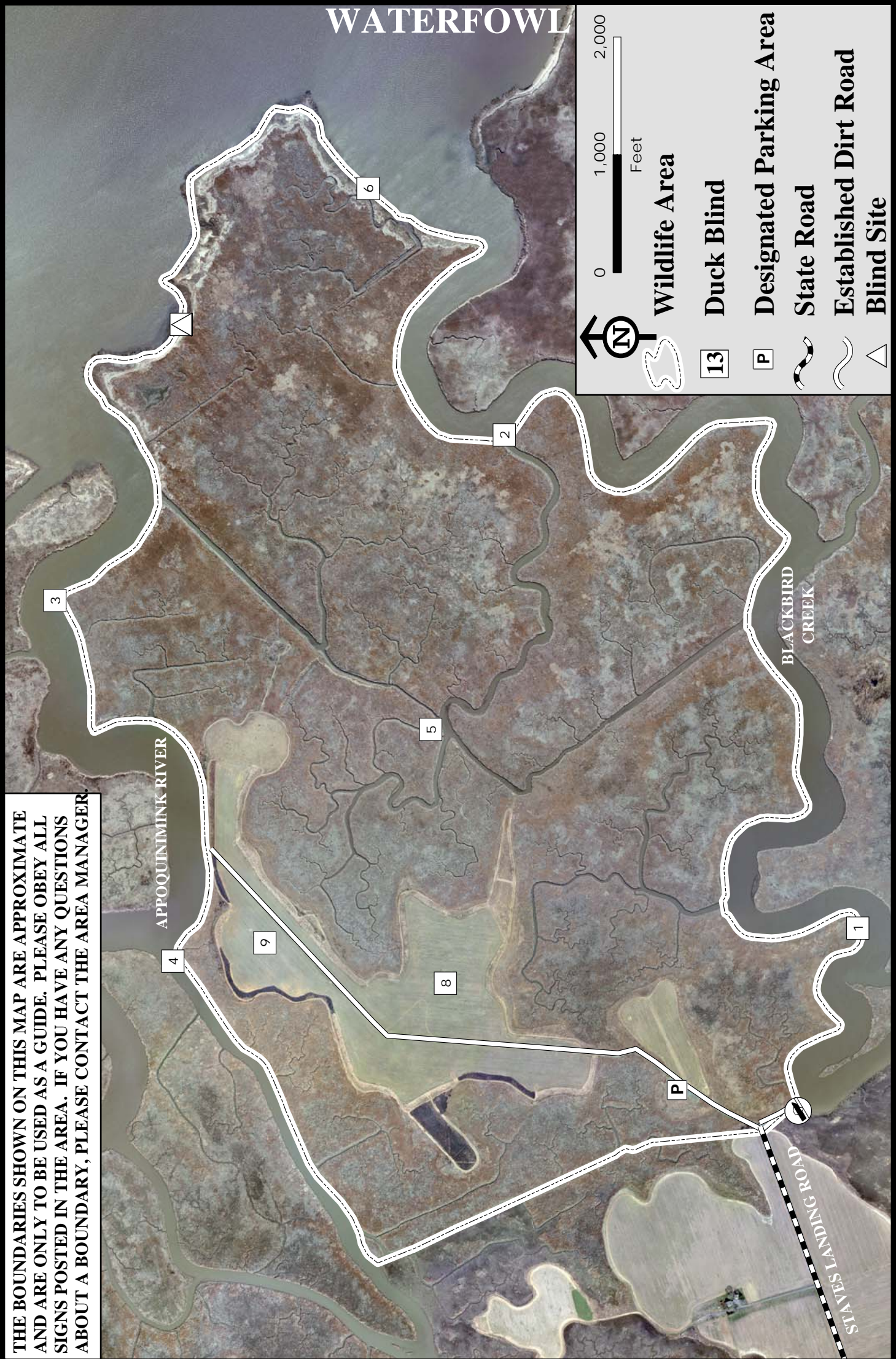


CEDAR SWAMP WILDLIFE AREA (5,515 ACRES) THE ROCKS



THE BOUNDARIES SHOWN ON THIS MAP ARE APPROXIMATE AND ARE ONLY TO BE USED AS A GUIDE. PLEASE OBEY ALL SIGNS POSTED IN THE AREA. IF YOU HAVE ANY QUESTIONS ABOUT A BOUNDARY, PLEASE CONTACT THE AREA MANAGER.

**2011-2012
CEDAR SWAMP WILDLIFE AREA
Rocks Tract**

WATERFOWL

Persons may hunt on the Rocks & Bell Tracts of the Cedar Swamp Wildlife Area only as directed by these rules, which have been established by Wildlife Regulation 3908 (WR-3908) of the Division of Fish and Wildlife, pursuant to Section 103, 7 Delaware Code. Violators of wildlife area regulations may be subject to fines and or revocation of their hunting privileges on state wildlife areas for up to one year.

PERSONS UNDER THE INFLUENCE OF ALCOHOLIC BEVERAGES OR DRUGS OR POSSESSING OR CONSUMING ALCOHOLIC BEVERAGES OR DRUGS SHALL NOT BE PERMITTED TO HUNT AND/OR POSSESS FIREARMS ON DIVISION LANDS.

PERMITS

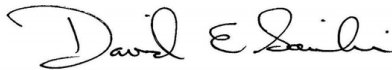
A STAND/BLIND PERMIT IS REQUIRED TO HUNT DURING ALL DEER FIREARMS AND WATERFOWL SEASONS.

A. WATERFOWL HUNTING REGULATIONS

1. Hunting by permit only, issued by a daily lottery held at the **Cedar Swamp Lottery Station**.
2. Permits are issued from 1 1/2 hours before legal shooting time until 1:00 P.M.
3. Hunting days and Hours: **Opening days, Tuesdays, Thursdays and Saturdays** during the regular waterfowl season from ½ hour before sunrise until sunset. NOTE: Area may be closed during early and late snow goose seasons. To assure the area is open, please call the Augustine Wildlife Area at 834-8433, or Division of Fish and Wildlife Office in Dover at 739-9912.
4. All hunting from state-built pits, blinds, or blind sites only (locations on maps).
5. No more than 3 persons may occupy one pit or blind.
6. All permits must be filled out and deposited in the drop boxes located on the area or checking station at the end of the day's hunt. Failure to accurately report harvest and return permits will result in loss of hunting privileges.
7. No airboats.
8. No waterfowl hunting from upland fields, except from designated goose blinds.
9. Park in appropriate parking lot (see map). Do not park at ramp or on the side of the road (See Staves Landing Access Policy below). Do not drive into fields.
10. Hunters using duck blinds (1-7 & 27) must have a boat and required safety equipment to hunt. See Delaware Hunting Guide for regulations.
11. Hunters must vacate all hunting areas by one hour after sunset.
12. This area will be open during the Snow Goose Conservation Order. See official seasons and regulations as published in the 2011-2012 Delaware Migratory Game Bird Season Summary.

B. FIREARMS - No firearms on Division lands from March 1 - August 31 except by permit during legal hunting seasons authorized by the Division of Fish and Wildlife. Target shooting is prohibited.

C. STAVES LANDING ACCESS POLICY - The ramp at Staves Landing is an unimproved boat site intended for the limited launching and retrieving of small boats. There is no parking at the launching site. All vehicles and trailers must be parked in the parking lot (see map).



David E. Saveikis, Director

For further information, contact the Division of Fish and Wildlife, Dover, Delaware 19901 (Telephone: 739-9912), the Augustine Wildlife Area (834-8433), or the Cedar Swamp Checking Station (653-8080).

To report wildlife or wildlife area violations, or to contact an enforcement agent call the Department Communication Center toll free at 1-800-523-3336.

State and Federal law prohibit discrimination on the basis of race, color, national origin, age, sex, religion and/or handicap or disability. If you believe you have been discriminated against in any program, activity or facility, or if you desire further information, please write to:

Office for Equal Opportunity
U. S. Department of Interior
Washington, D.C. 20240

OR

Division of Fish and Wildlife
89 Kings Highway
Dover, DE 19901

Federal Aid Project W-5-D