

TED HARVEY CONSERVATION AREA

2,661 ACRES

LOGAN LANE TRACT UPLAND/DEER



WILDLIFE AREA



ESTABLISHED DIRT ROAD



REFUGE



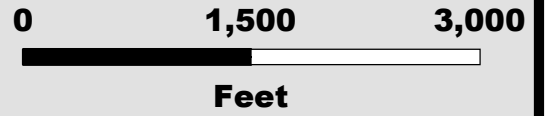
STATE ROAD



SAFETY ZONE



TRAIL



25

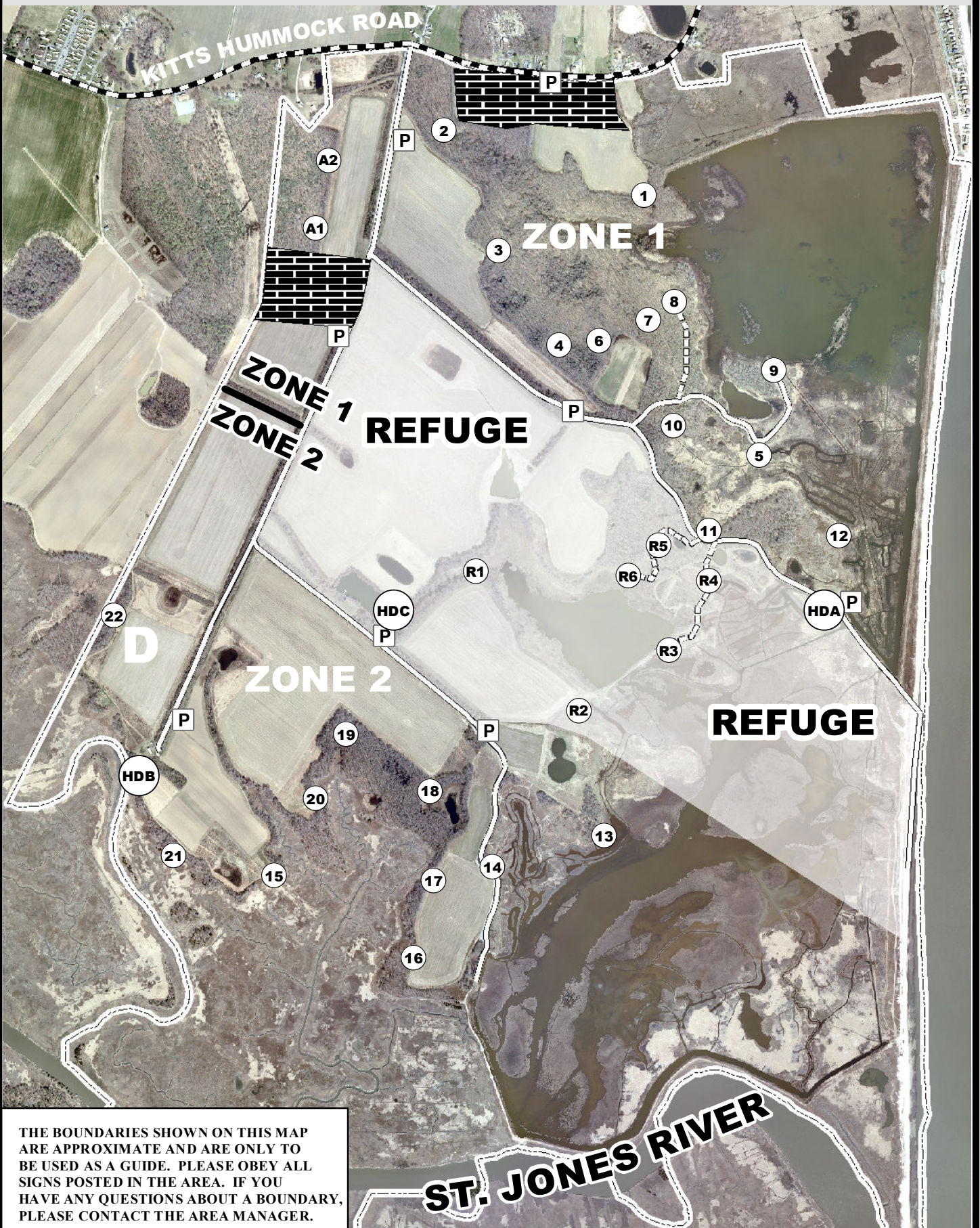
DEER STAND

D

DOVE FIELD

P

DESIGNATED PARKING AREA



THE BOUNDARIES SHOWN ON THIS MAP ARE APPROXIMATE AND ARE ONLY TO BE USED AS A GUIDE. PLEASE OBEY ALL SIGNS POSTED IN THE AREA. IF YOU HAVE ANY QUESTIONS ABOUT A BOUNDARY, PLEASE CONTACT THE AREA MANAGER.

2011 – 2012

**TED HARVEY WILDLIFE AREA - LOGAN LANE TRACT
DEER & UPLAND HUNTING**

Persons may hunt on the Ted Harvey Wildlife Area – Logan Lane Tract only as directed by these rules, which have been established by Regulation 3908 of the Division of Fish and Wildlife, pursuant to Section 103, 7 Delaware Code.

Violators of wildlife area regulations may be subject to fines and/or revocation of their hunting privileges on state wildlife areas for up to one year.

A STAND/BLIND PERMIT MUST BE SHOWN BY EACH HUNTER PRIOR TO OBTAINING A DAILY HUNTING PERMIT DURING ALL DEER FIREARMS AND WATERFOWL SEASONS.

A. DEER - GENERAL

1. **Deer Hunting will not be open during the Special October Antlerless Firearm Seasons.**
2. A daily permit is required to hunt deer (except archery hunters – See Deer Archery).
3. All firearms deer hunters must check in at the **Little Creek Checking Station** prior to hunting. For the Muzzleloader and Shotgun seasons a daily lottery for stands will be held **1 ½ hours** before legal shooting time. **Hunters** should arrive at check station **prior to 15 minutes** before the daily lottery. Stands vacated by hunters leaving early or were not issued prior will be issued by a second lottery at **12:00 noon**.
4. All permits **MUST** be returned to the checking station at the end of the days hunt. **FAILURE TO ACCURATELY REPORT HARVEST AND RETURN PERMITS WILL RESULT IN LOSS OF HUNTING PRIVILEGES.** A blank card will be interpreted as zero (0) harvest.
5. Hunters will park in the appropriate parking lot (see map) and go directly to their stands.
6. Hunters may not drive deer and must hunt from state-built stands during firearms deer seasons.
7. No hunting is permitted in refuge area except as outlined below in section D.
8. **Stands A1 and A2 are for archery & crossbow hunting only. (No Muzzleloaders or Shotguns)**
9. A handgun may be used in place of a shotgun for deer hunting during any shotgun season when a shotgun is the legal weapon. Handgun deer hunting will be allowed on some Ted Harvey tracts on certain days during the January season. For details, check online at www.dnrec.state.de.us/fw during the fall hunting season or call the **Little Creek Check Station at (302) 739-4610**

B. DEER – ARCHERY & CROSSBOW

1. Archery & crossbow hunters must register for a zone at the tagboard located across from the information board. Zones are the same as used for upland hunting (see map). Hunters may hunt anywhere within the zone except the refuge, safety zones and dikes.
2. Hunters must place tags on empty hooks when registering for zones and sign the registration sheet. If no empty hooks are available, the zone is full. Hunters must remove tags when leaving the area. Zone availability is first-come, first-serve. **No one may register prior to 4:00 A.M. the morning of the hunt.**
3. Hunters may use state-built stands, hunt from the ground or portable stands. No permanent stands may be built and all parts of a portable stand must be removed at the end of the days hunt. No screw-in tree steps are allowed.
4. During any firearm deer season stands will be issued through the Little Creek Check Station.
5. Stands A1 and A2 will be open during the muzzleloader and shotgun seasons for archery & crossbow hunting only. The stands will be issued through the daily lottery and archers will be required to wear hunter orange clothing.

C. DEER – MUZZLELOADER

1. Deer hunting with muzzleloader will be open all days of the October and January seasons by permit only. **Upland game hunting will be occurring concurrently during the January season.**
2. Hunting from **Refuge Stands R1 – R6** will be permitted on the Wednesday of each muzzleloader season by daily lottery.

D. DEER – SHOTGUN

1. Deer hunting with shotgun will be **OPEN all days of the November Season, Monday, Wednesday and Friday of the December Antlerless Season, and Tuesday, Thursday, and Saturday of the January Season** by permit only. Limited number of stands will be open during Youth Deer Hunt and Saturdays of December Antlerless season.
2. Hunting from Refuge Stands R1-R6 will be permitted the Monday and second Friday of the November Shotgun season, Monday and Friday of the December Antlerless season, Tuesday and Thursday of the January Shotgun season and during the Youth Deer Hunt.

E. DEER – DISABLED HUNTERS - Disabled hunting locations (HDA, HDB, & HDC) are available for non-ambulatory disabled hunters. HDA & HDC will be closed on Youth Day, Monday and the second Friday of November shotgun season and Thursday during muzzleloader seasons. During the archery season, hunting at HDA & HDC on the refuge is restricted to 2 times per week per individual disabled hunter. Permits for these stands during firearms seasons will be issued by a daily lottery conducted at the checking station at 11:00 AM the day prior to the hunt. Enter this lottery by calling the checking station at 653-4802. For opening day reservations, call 284-1077 at least 1 week prior to the season. Deer stands 9-13 & R3 have been modified to accommodate less severe disabled hunters.

HDC only open Tuesdays, Thursdays and Saturdays during archery season and closed when stands R1-R6 are open during firearm season.

F. UPLAND HUNTING, FOX & TURKEY HUNTING, DOG TRAINING

1. Upland game (gray squirrel, rabbit, pheasant, quail, dove, woodcock, snipe, and crows) hunting will be allowed in season by permit **Mondays, Wednesdays and Fridays** during November, December, January, & February **EXCEPT -Closed Antlerless Deer Season.**
2. Permits will be issued by lottery at **8:00 am at the Little Creek Check Station.** Hunters must vacate the area by 3:30 pm daily.
3. Two parties, of up to 4 hunters each, will be given permits at any one time. Upland hunters may not take or attempt to take waterfowl.
4. Hunters or their dogs may not enter the refuge for any reason.
5. No raccoon or fox chasing/hunting is permitted.
6. Turkey hunting on entire area, including the refuge is permitted with a valid Ted Harvey Turkey Hunting Permit.
7. **Fox hunting allowed in season while hunting other game species per these map regulations.**
8. **Dog training not allowed on this area.**

G. DOVE HUNTING

1. This area has fields planted with grain or sunflowers and mowed prior to the dove season to attract doves. Pre-season scouting is advised. Fields are marked with a “D” on the front of the map. **DURING THE MONTH OF SEPTEMBER, ALL DOVE HUNTING ON STATE WILDLIFE AREAS WILL REQUIRE THE USE OF NON-TOXIC SHOT.**

2. Hunting will be from **1:00 pm – 5:00 pm on Opening Day, Labor Day, Tuesdays, Thursdays, and Saturdays in September** by permit only. A drawing will be held at **12:00 pm** to issue permits at the **Little Creek Checking Station.**

H. HORSEBACK RIDING – Horseback riding is not permitted on this tract.

I. VEHICLES – Off established road use of motorized vehicles (including tax ditch right-of-ways) is unlawful without a permit. Parking only allowed at designated parking areas.

J. ALCOHOL – Persons under the influence of alcoholic beverages, liquors, or drugs or possessing and/or consuming alcoholic beverages, liquors, or drugs shall not be permitted to hunt and/or possess firearms on Division lands.



For further information, contact the Division of Fish and Wildlife, Dover Delaware 19901. Phone (302) 284-1077 or Little Creek Checking Station (302)739-4610. State and Federal law Prohibit discrimination on the basis of race, color, national origin, age, sex, religion and/or handicap or disability. If you believe you have been discriminated against in any program, activity, or facility, or if you desire further information, please write to:

Office for Equal Opportunity
U.S. Department of Interior
Washington, D.C. 20240

Division of Fish and Wildlife
89 Kings Highway
Dover, Delaware 19901

Federal Aid Project W-5-D