



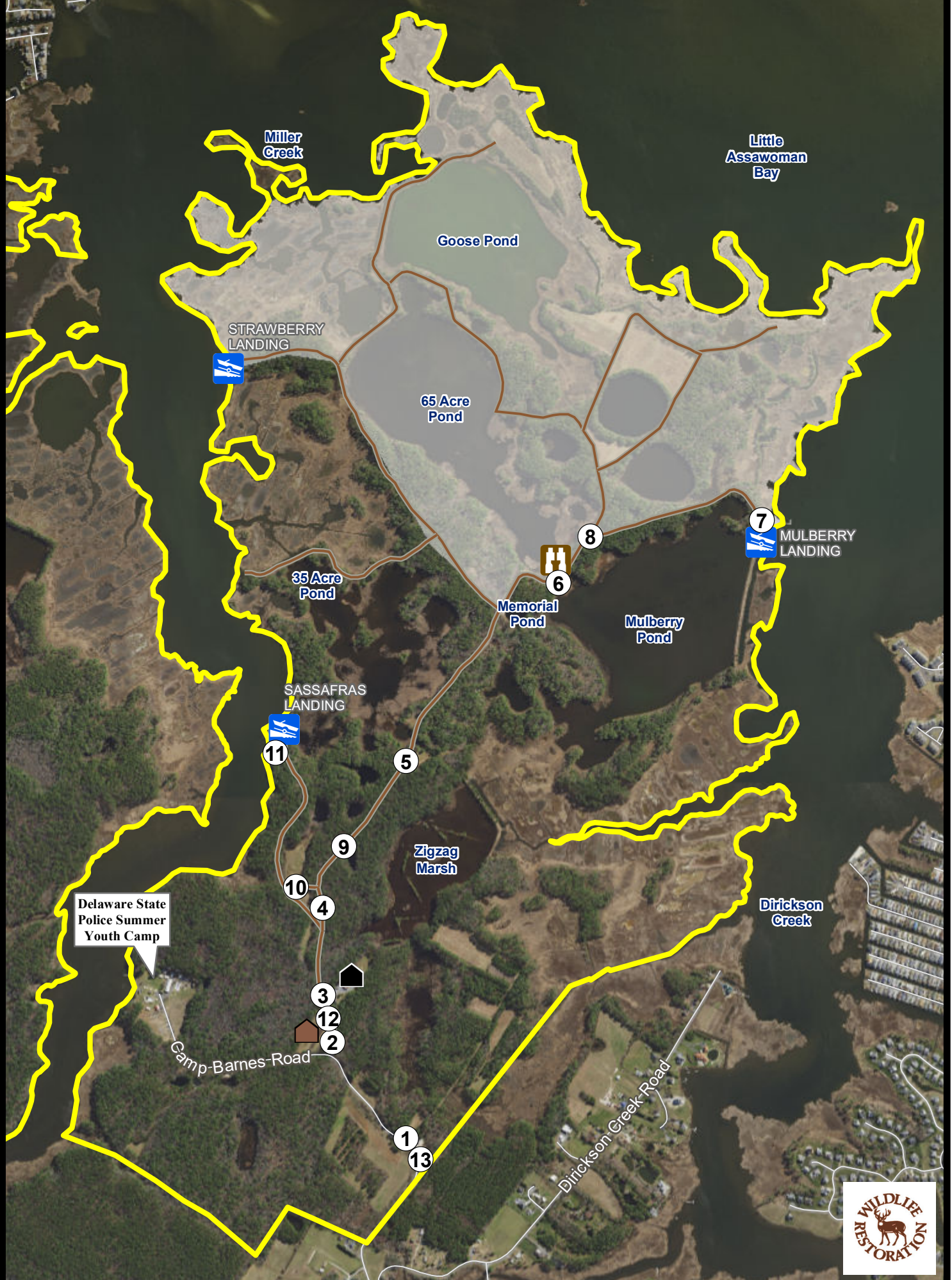
# ASSAWOMAN WILDLIFE AREA



## Automobile Tour

We Bring You Delaware's Great Outdoors  
through Science and Service

Effective July 1, 2017, a Conservation Access Pass (CAP) is required for any registered motor vehicle used to access designated Delaware State Wildlife Areas.



- |               |                   |                        |
|---------------|-------------------|------------------------|
| Wildlife Area | Boat Ramp         | Wildlife Viewing Tower |
| Refuge        | Area Headquarters | Dirt Road              |
| AutoTour Stop | Check Station     |                        |

← (Z) →  
 THE BOUNDARIES SHOWN ON THIS MAP ARE APPROXIMATE AND ARE ONLY TO BE USED AS A GUIDE.

**AUTO TOUR**  
**ASSAWOMAN WILDLIFE AREA**  
Effective July 1, 2020 – June 30, 2021

Persons may use state wildlife areas only as directed by the following rules, which have been established by Wildlife Regulations 3900 of the Division of Fish and Wildlife, pursuant to Section 103, 7 Delaware Code.

**\*As of July 1, 2017, a Conservation Access Pass (CAP) is required for any registered motor vehicle used to access designated public lands owned or managed by the Division of Fish & Wildlife. For more information go to [www.de.gov/fw](http://www.de.gov/fw) or call (302)739-9912.**

Welcome to one of the busiest Wildlife Areas in Delaware. Here on the **Assawoman Wildlife Area** the needs of the animals and plants come first, human outdoor recreation comes second.

**Wildlife areas are managed for the needs of native plants and animals.** Most management efforts relate to habitat protection and enhancement. Several rare plants grow in the wet woods. The ponds are managed for waterbirds, such as waterfowl, wading birds, and shorebirds. Ospreys and bald eagles live along the Little Assawoman Bay. These diverse groups of animals and their habitats have one thing in common – the need of critical habitat protection. That's called putting the "wild" back into "Wildlife Area".

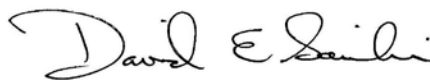
An interpretive tour was developed to help explain management techniques on **Assawoman Wildlife Area**. Brochures are available at the starting point near the main entrance sign.

Please respect our efforts and abide by the rules. Enjoy your visit.

**Special Note:** The road may be closed without notice on days with precipitation in excess of one inch (1"). When the road is dry enough to prevent pothole formation, the road is opened as soon as possible. During a temporary road closure you are free to hike the roads. Thanks for your patience.

**REGULATIONS (Please see Assawoman General Overview and Hunting maps for additional rules and regulations)**

1. State regulations **prohibit the use of non-registered vehicles** on any wildlife area. All other vehicles must use only designated roads, not exceed 20 M.P.H., and not make excessive noise.
2. No person may **trespass into areas closed** by the Division.
3. **Area is closed from sunset to sunrise unless legally hunting or fishing.** You must leave promptly at sunset, and not wait until last light.
4. Firearms are allowed except for designated prohibited areas; the Division may authorize firearm possession in designated prohibited areas. Target shooting is prohibited. Call Ommelanden Shooting Range for year-round target shooting information at 302-323-5333.
5. **No dumping or littering.** State Wildlife Areas are **Designated Carry In-Carry out Trash Disposal Areas**. Please take your refuse home with you.
6. Horses may be used **only on established roads open to vehicular traffic**.
7. **No camping or swimming** without special authorization.
8. **Dogs must be properly licensed and must be leashed at all times** unless lawfully hunting. Please remove your dog's feces from the ground and dispose of it properly.
9. Pavilion use is first come, first served. No reservations are accepted. Call 539-3160 for information on the pavilions.
10. **All fish caught from Memorial Pond must be released to that pond immediately.**



David E. Saveikis, Director

For further information contact the Division of Fish and Wildlife at (302) 739-9912 or the Sussex County HQ at (302) 539-3160.

**For emergencies or to report violations please call the Enforcement Section at 1-800-523-3336.**