

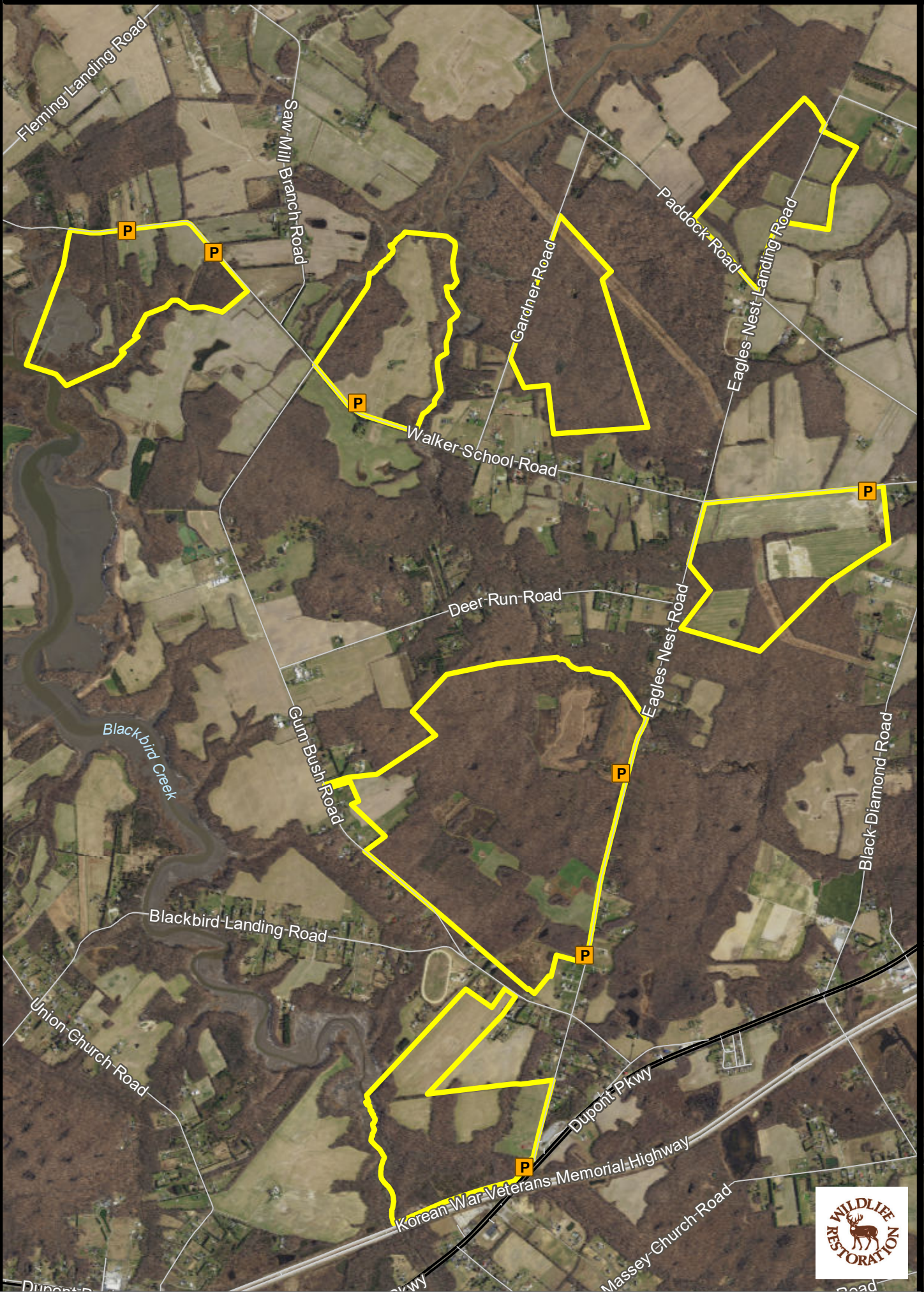


# EAGLES NEST WILDLIFE AREA

## General Overview



WE BRING YOU DELAWARE'S GREAT OUTDOORS THROUGH SCIENCE AND SERVICE



Wildlife Area



CAP Required



THE BOUNDARIES SHOWN ON THIS MAP ARE APPROXIMATE AND ARE ONLY TO BE USED AS A GUIDE.



**General Rules and Regulations Governing Land and Waters**  
**Administered by the Delaware Division of Fish & Wildlife**  
(Effective July 1, 2020 – June 30, 2021)

Persons may use state wildlife areas only as directed by the following rules, which have been established by Wildlife Regulations 3900 of the Division of Fish and Wildlife, pursuant to Section 103, 7 Delaware Code. Please refer to the area specific **Hunting** maps for additional access and allowable use information.

### **GENERAL**

1. Effective July 1, 2017, a Conservation Access Pass is required for any registered motor vehicle used to access designated Delaware State Wildlife Areas for any allowable activities, including hunting, birdwatching, hiking and photography.
2. Entry is permitted between sunrise and sunset unless lawfully hunting, fishing or boating.
3. All lands administered by the Division are Carry-In / Carry-Out. Littering or dumping trash including yard waste is prohibited.
4. The following activities are prohibited on State Wildlife Areas:
  - Damaging or defacing buildings, equipment, structures, signs or land features
  - Operating radio controlled devices, including drones, or the launching of model rockets
  - Allowing dogs to run off leash. See #16 below for dog training and hunting information
  - Camping or lighting open fires of any type
  - Swimming
  - Posting signs, banners or notices of any type
  - Vending or soliciting of any type
  - Placing caches or letterboxes
  - Cutting, injuring or removing trees, shrubs, wildflowers, ferns, mosses, other plants or firewood
  - Collecting and/or removing any wildlife species unless lawfully hunting, trapping or fishing
  - Operating unlicensed vehicles or any other motorized vehicle (including motorized bicycles) off of established roadways or driving in excess of 20 MPH on wildlife area roads
  - Parking in a manner that blocks access to a road, trail, or boat ramp. Violators will be towed at owner's expense
  - Leaving a vehicle or trailer unattended over 24 hours
5. Licensed fishing is permitted according to area specific rules established on current area maps.
6. Horses and bicycles may only be ridden on maintained roads or trails that have been designated by the Division on current area maps.

### **HUNTING/TRAPPING**

7. Hunting is permitted in season and in accordance with state laws, regulations, and rules as specified on current wildlife area maps.
8. Placement of temporary deer stands that involve placing nails or screws into trees is prohibited. See respective area maps for which areas allow use of temporary stands.
9. Non-residents are prohibited from participating in deer drives. No more than six (6) resident hunters may participate in driving deer at any one time.
10. Hunting is prohibited on all Division dikes and walking on dikes is prohibited during all waterfowl seasons.
11. Entering tidal and/or impounded waters managed by the Division is prohibited during the waterfowl season unless lawfully hunting or trapping.
12. Persons who possess, consume, or are under the influence of drugs or alcoholic beverages are prohibited from hunting or possessing firearms.
13. Firearms are allowed except for designated prohibited areas; the Division may authorize firearm possession in designated prohibited areas.
14. The discharge of any firearm including paintball guns, air rifles, bows, and crossbows is prohibited unless lawfully hunting. Target shooting is prohibited at any time.
15. Trapping is prohibited except by valid contract or permit holders.
16. Dog training is prohibited except within established dog training areas, during the open hunting season for the game that the dog is being trained to hunt, or in accordance with rules established on current area maps.



David E. Saveikis, Director

For further information contact the Division of Fish and Wildlife at (302) 739-9912, New Castle County HQ: (302) 834-8433, Kent County HQ: (302) 284-4795, Sussex County HQ: (302) 539-3160.

**For emergencies or to report violations please call the Enforcement Section at 1-800-523-3336.**