



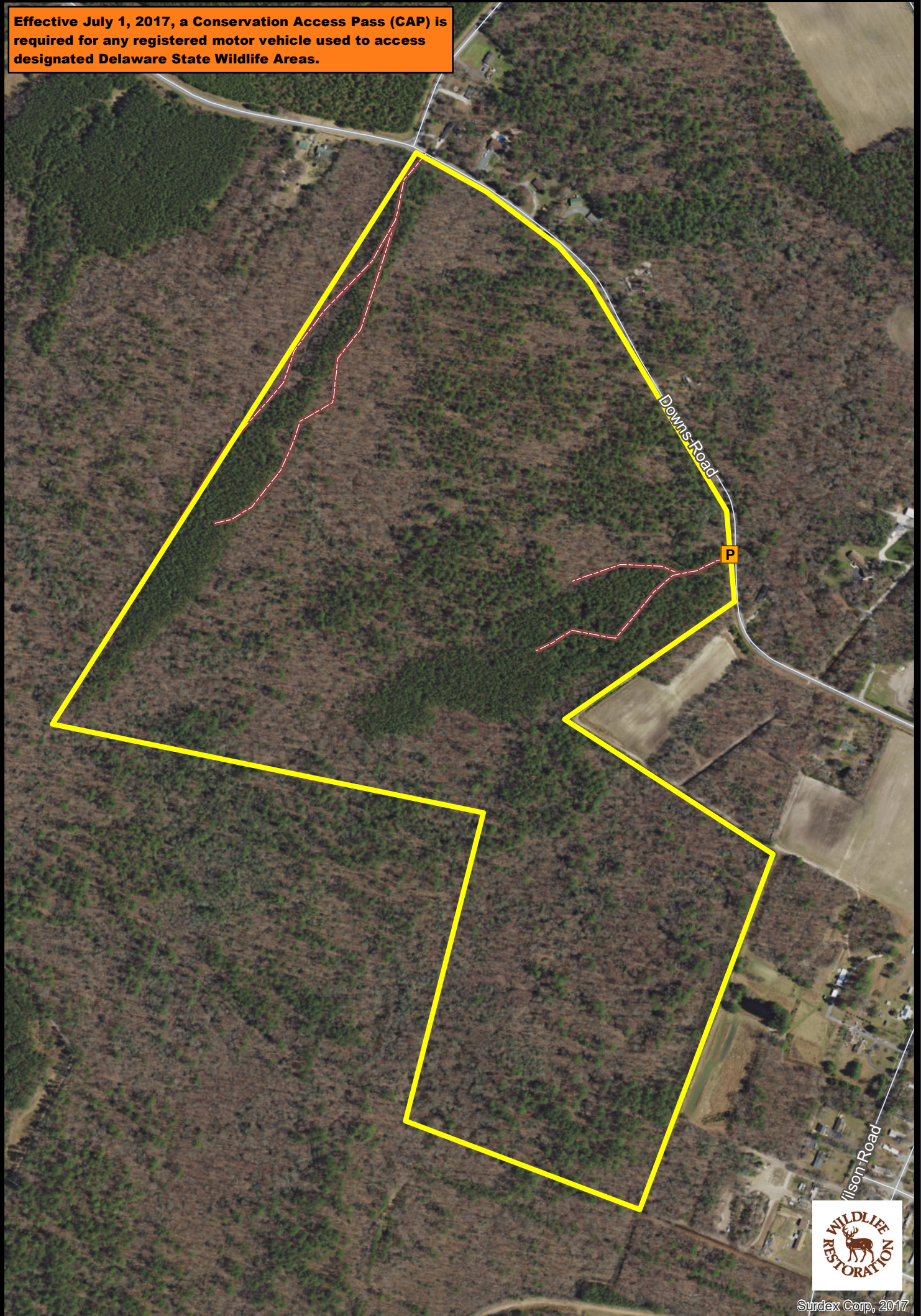
OLD FURNACE WILDLIFE AREA






Lang Tract Hunting

*We Bring You Delaware's Great Outdoors
through Science and Service*

Effective July 1, 2017, a Conservation Access Pass (CAP) is required for any registered motor vehicle used to access designated Delaware State Wildlife Areas.



Surdex Corp, 2017

-  Wildlife Area
-  Trail
-  CAP Required



THE BOUNDARIES SHOWN
ON THIS MAP ARE
APPROXIMATE AND ARE
ONLY TO BE USED AS
A GUIDE.

HUNTING
OLD FURNACE WILDLIFE AREA
Effective July 1, 2020– June 30, 2021

Persons may use state wildlife areas only as directed by the following rules, which have been established by Wildlife Regulations 3900 of the Division of Fish and Wildlife, pursuant to Section 103, 7 Delaware Code. Please refer to the **General Overview** map for additional access and allowable use information.

***As of July 1, 2017, a Conservation Access Pass (CAP) is required for any registered motor vehicle used to access designated public lands owned or managed by the Division of Fish & Wildlife. For more information go to www.de.gov/fw or call (302)739-9912.**

GENERAL RULES

1. Violators of wildlife area regulations may be subject to fines and/or revocation of hunting privileges on state wildlife areas for up to one year.
2. Persons who possess, consume, or are under the influence of drugs or alcoholic beverages are prohibited from hunting or possessing firearms on Division Lands.
3. Firearms may not be discharged outside of established hunting seasons. Target shooting is prohibited at any time.

DEER HUNTING

**** SUNDAY DEER HUNTING PERMITTED. SEE SUNDAY DEER HUNTING MAPS FOR OPEN AREAS AND HUNTING IMPLEMENT RESTRICTIONS ****

1. Deer hunters may hunt anywhere (excluding posted refuges, safety zones, and by special rules only within the disabled hunting zone) in season.
2. This area **IS OPEN** for the special October antlerless firearms season.
3. Two disabled deer stands are available for hunters possessing a State Disabled Hunter Permit. Disabled hunters may drive back and park in the designated disabled parking area. Archery hunting is prohibited within 100 yards of these stands and firearms deer hunting is prohibited within the entire disabled zone except for these two stands.
4. Deer hunters may use temporary portable stands. No permanent deer stands, platforms, ladders, or blinds may be constructed. No screw-in steps, tree spikes, screws, or nails are allowed. Temporary portable stands may be placed after August 1 and must be removed by February 15. Any stands remaining after this date will be removed and become property of the Division of Fish and Wildlife.
5. The Division is not responsible for theft or damage to any temporary stand and placement of a temporary stand does not give the stand owner any exclusive hunting rights to that area.
6. Deer drives are permitted between the hours of 9:00 AM and 3:00 PM. No more than 6 resident hunters may participate in deer drives. Non-resident hunters are prohibited from participating in deer drives.
7. Handguns are permitted during any season where a shotgun is legal and also during the January handgun season.
8. Hunters are permitted to use designated established roadways to retrieve harvested deer between the hours of 10:00 AM – 12:00 PM and from ½ hour after sunset – 9:00 PM.

UPLAND HUNTING

A. Small Game

1. Small game hunters must display at least 250 square inches of blaze orange while hunting on State Wildlife Areas.
2. Small game hunting permitted anywhere (excluding posted refuges and safety zones) in season.
3. Rabbit hunting closed during December antlerless and January shotgun deer seasons.
4. Hunting prohibited within posted refuges and safety zones and dogs are not permitted to enter refuges for any reason.
5. Rabbit dogs may be trained only on the following Sundays: September 6, 13, 20, 27, November 1, 8.

B. Dove

1. No person shall hunt doves on state wildlife areas during the early season while possessing shot other than approved nontoxic shot.

2. Dove hunting permitted anywhere (excluding posted refuges and safety zones) in season.

C. Turkey

1. Turkey hunting by permit only. Permits awarded through preseason lottery. See Delaware Hunting and Trapping Guide for application.

D. Furbearers

1. Trapping is prohibited.
2. Raccoon hunting is permitted from Sept 1 – March 31 during legal raccoon hunting seasons.
3. Fox and coyote hunting permitted in season while hunting other game species per these map regulations. No fox chasing permitted during any deer firearm season or prior to 1:00 PM during turkey season.

WATERFOWL HUNTING

1. Waterfowl hunting is prohibited on this area.



David E. Saveikis, Director

For further information contact the Division of Fish and Wildlife at (302) 739-9912 or the Sussex County HQ at (302) 539-3160.

For emergencies or to report violations please call the Enforcement Section at 1-800-523-3336.