



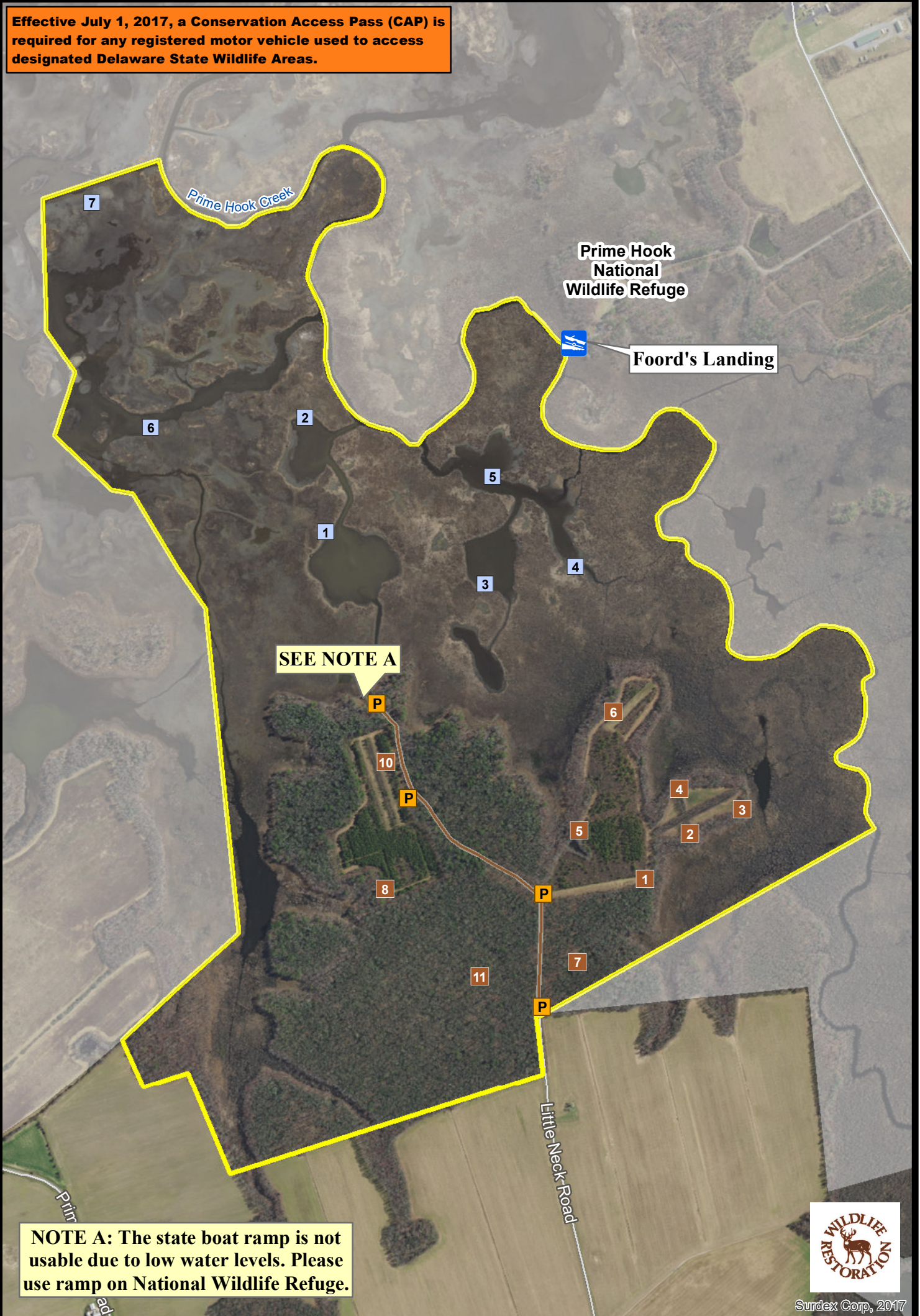
PRIME HOOK STATE WILDLIFE AREA



Hunting

We Bring You Delaware's Great Outdoors
through Science and Service

Effective July 1, 2017, a Conservation Access Pass (CAP) is required for any registered motor vehicle used to access designated Delaware State Wildlife Areas.

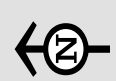


NOTE A: The state boat ramp is not usable due to low water levels. Please use ramp on National Wildlife Refuge.



Surdex Corp, 2017

-  Wildlife Area
-  National Wildlife Refuge
-  CAP Required
-  Deer Stand
-  Waterfowl Blind
-  Dirt Road
-  CAP Exempt



THE BOUNDARIES SHOWN ON THIS MAP ARE APPROXIMATE AND ARE ONLY TO BE USED AS A GUIDE.

HUNTING
PRIME HOOK WILDLIFE AREA
Effective July 1, 2020 – June 30, 2021

Persons may use state wildlife areas only as directed by the following rules, which have been established by Wildlife Regulations 3900 of the Division of Fish and Wildlife, pursuant to Section 103, 7 Delaware Code. Please refer to the **General Overview** map for additional access and allowable use information.

***As of July 1, 2017, a Conservation Access Pass (CAP) is required for any registered motor vehicle used to access designated public lands owned or managed by the Division of Fish & Wildlife. For more information go to www.de.gov/fw or call (302)739-9912.**

GENERAL

1. Violators of wildlife area regulations may be subject to fines and/or revocation of hunting privileges on state wildlife areas for up to one year.
2. Persons who possess, consume, or are under the influence of drugs or alcoholic beverages are prohibited from hunting or possessing firearms on Division Lands.
3. Firearms may not be discharged outside of established hunting seasons. Target shooting is prohibited at any time.

DEER HUNTING

**** SUNDAY DEER HUNTING PERMITTED. SEE SUNDAY DEER HUNTING MAPS FOR OPEN AREAS AND HUNTING IMPLEMENT RESTRICTIONS ****

1. Deer hunters may hunt anywhere (excluding posted refuges and safety zones) during all archery and firearms seasons including the firearms season.
2. This area **IS OPEN** for the special October antlerless firearms season.
3. Ten permanent deer stands are available on a first-come first-served basis; hunters should use the tag board at the entrance to select a permanent deer stand.
3. Deer hunters may use temporary portable stands. No permanent deer stands, platforms, ladders, or blinds may be constructed. No screw-in steps, tree spikes, screws, or nails are allowed. Temporary portable stands may be placed after August 1 and must be removed by February 15. Any stands remaining after this date will be removed and become property of the Division of Fish and Wildlife.
4. The Division is not responsible for theft or damage to any temporary stand and placement of a temporary stand does not give the stand owner any exclusive hunting rights to that area.
5. Deer drives are permitted between the hours of 9:00 AM and 3:00 PM. No more than 6 resident hunters may participate in deer drives. Non-resident hunters are prohibited from participating in deer drives.

UPLAND HUNTING

A. Small Game

1. Small game hunters must display at least 250 square inches of blaze orange while hunting on State Wildlife Areas.
2. Small game hunting permitted in season, no permit required.
3. Rabbit hunting closed the week before and the week of December antlerless deer season and during the January shotgun deer season.
4. Hunting prohibited within posted refuges and safety zones and dogs are not permitted to enter refuges for any reason.
5. Rabbit dogs may be trained only on the following Sundays: September 6, 13, 20, 27, November 1, 8.

B. Dove

1. No person shall hunt doves on state wildlife areas during the early season while possessing shot other than approved nontoxic shot.
2. Dove hunting permitted on the entire area during all seasons (excluding posted refuges, safety zones), no permit required.

C. Turkey

1. Turkey hunting by permit only. Permits awarded through preseason lottery. See Delaware Hunting and Trapping Guide for application.

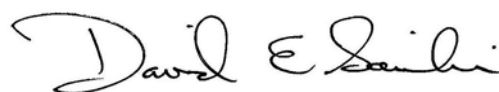
D. Furbearers

1. No trapping except by valid contract holders. Trapping rights awarded through competitive bids. Call (302) 739-9912 for bidding information.
2. Raccoon hunting is permitted from Sept 1 – March 31 during legal raccoon hunting seasons.
3. Fox and coyote hunting permitted in season while hunting other game species per these map regulations. No fox chasing permitted during any deer firearm season or prior to 1:00 PM during turkey season.

WATERFOWL HUNTING

Due to low water levels hunters must use the Foords Landing boat ramp located on the Federal Wildlife Refuge as the state ramp is not unusable.

1. Blinds and blind sites issued by lottery held at the Prime Hook National Wildlife Refuge checking station 2 1/2 hours before sunrise. Blinds can be signed out until 12:00 PM.
2. Hunting permitted on opening day, Monday, Wednesday, Friday, and Saturday during all regular waterfowl seasons.
3. All hunting from state and federal blinds and blind sites only.
4. Hunting permitted from ½ hour before sunrise until 4:00 PM. Hunters must vacate the area by 5:00 PM.
5. No more than 3 persons per pit, blind, or blind site.
6. This area **IS OPEN** for the early teal season, however only State blinds and blind sites are open, no Federal blind sites are open for early teal.
7. During waterfowl hunting seasons, no boats are allowed at access ramps or in impoundments without a valid waterfowl hunting permit for that day.
8. Airboats are prohibited.
9. Hunters using marsh and river blinds and blind sites must have a boat and required safety equipment.
10. This area will be open during the Snow Goose Conservation Order. See official seasons and regulations. No permit or sign-in required during the conservation order.



David E. Saveikis, Director

For further information contact the Division of Fish and Wildlife at (302) 739-9912 or the Sussex County HQ at (302) 539-3160.

For emergencies or to report violations please call the Enforcement Section at 1-800-523-3336.