



# TED HARVEY CONSERVATION AREA

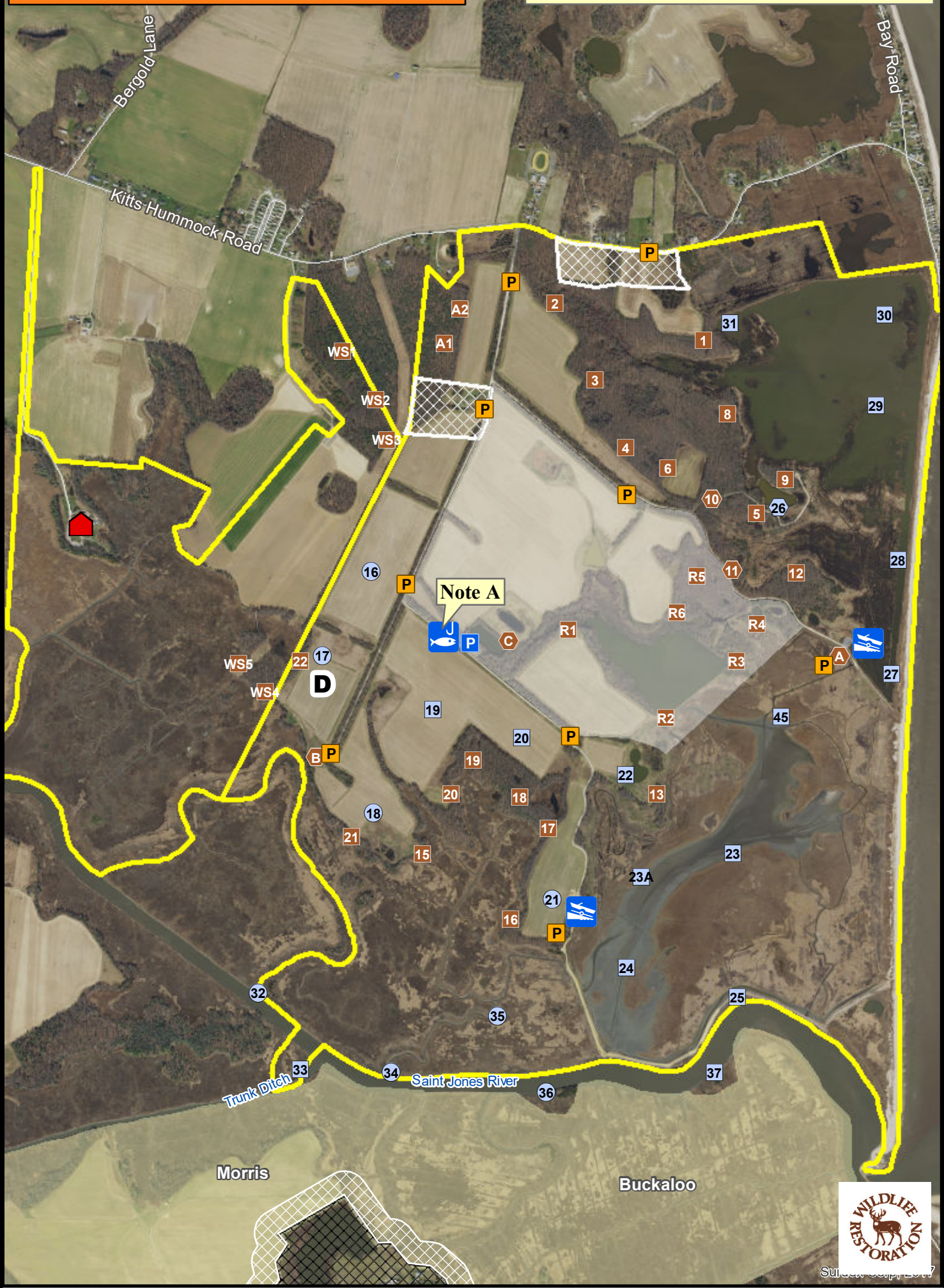
## Logan Lane & Wilson-Slaughter Tracts Hunting



We Bring You Delaware's Great Outdoors  
through Science and Service

Effective July 1, 2017, a Conservation Access Pass (CAP) is required for any registered motor vehicle used to access designated Delaware State Wildlife Areas.

Note A: Logan Lane Pond is for handicapped fishing only, no CAP is required.



Source: Sept 2017

Wildlife Area	CAP Required	HD Waterfowl Blind
Refuge	Deer Stand	Waterfowl Blind Site
Safety Zone	HD Deer Stand	Dove Field
CAP Exempt	Waterfowl Blind	

THE BOUNDARIES SHOWN ON THIS MAP ARE APPROXIMATE AND ARE ONLY TO BE USED AS A GUIDE.

**HUNTING**  
**TED HARVEY CONSERVATION AREA**  
**LOGAN LANE AND WILSON-SLAUGHTER TRACTS**  
Effective July 1, 2020 – June 30, 2021

Persons may use state wildlife areas only as directed by the following rules, which have been established by Wildlife Regulations 3900 of the Division of Fish and Wildlife, pursuant to Section 103, 7 Delaware Code. Please refer to the [General Overview](#) map for additional access and allowable use information.

**\*As of July 1, 2017, a Conservation Access Pass (CAP) is required for any registered motor vehicle used to access designated public lands owned or managed by the Division of Fish & Wildlife. For more information go to [www.de.gov/fw](http://www.de.gov/fw) or call (302)739-9912.**

### **GENERAL**

1. Violators of wildlife area regulations may be subject to fines and/or revocation of hunting privileges on state wildlife areas for up to one year.
2. Persons who possess, consume, or are under the influence of drugs or alcoholic beverages are prohibited from hunting or possessing firearms on Division Lands.
3. Failure to accurately complete and return harvest data cards may result in loss of hunting privileges.
4. Firearms may not be discharged outside of established hunting seasons. Target shooting is prohibited at any time.

### **DEER HUNTING**

**\*\* SUNDAY DEER HUNTING PERMITTED. SEE SUNDAY DEER HUNTING MAPS FOR OPEN AREAS AND HUNTING IMPLEMENT RESTRICTIONS \*\***

#### **A. Archery**

1. Archery hunters may hunt anywhere (excluding refuges, safety zones, and adjacent to agricultural fields on the Wilson-Slaughter Tract) by registering for a zone at the Logan Lane tag board.
2. Archery hunters must register through the lottery and hunt from lottery stands during all firearm deer seasons.
3. Archery hunting is closed during the special youth / non-ambulatory disabled deer hunt.
4. Archery hunters may use temporary portable stands. No permanent deer stands, platforms, ladders, or blinds may be constructed. No screw-in steps, tree spikes, screws, or nails are allowed. All parts of temporary portable deer stands must be removed at the end of each days hunt.

#### **B. Firearm – Muzzleloader, Shotgun, Handgun**

1. A Wildlife Area Deer Stand / Waterfowl Blind Lottery Permit is required to hunt during all deer firearms seasons.
2. Stands issued by lottery at the Little Creek Check Station. Drawings held 2 hours before sunrise. A second lottery will be held at 12:00 PM. No permits issued after 1:00.
3. This area **IS NOT OPEN** for the special October antlerless firearms season. Archery hunting is allowed during this season in accordance with state and area laws.
4. Refuge stands (R1-R6) are open during the youth hunt and on Mondays and Fridays of all firearm seasons beginning on the first Monday of November shotgun season.
5. Stands A1 and A2 are open as archery only during all deer firearm seasons.
6. Handgun hunting during the January handgun season will be allowed on Tuesday, Thursday, and Saturday only.
7. Deer drives are prohibited.
8. Only one firearm is permitted per deer stand.
9. Disabled deer hunting locations (HDA, HDB, HDC) are available for non-ambulatory hunters. HDC is closed on all refuge hunt days. These locations are awarded via a lottery held at 11:00 AM the day prior to the hunt. If not reserved in advance disabled locations are available through the daily lottery.

### **UPLAND HUNTING**

#### **A. Small Game**

1. Small game hunters must display at least 250 square inches of blaze orange while hunting on State Wildlife Areas.
2. Squirrel hunting permitted in season, no permit required.
3. Rabbit hunting by lottery only on Monday, Wednesday, and Friday. Lottery held at 8:00 AM at the Little Creek Check Station. Hunters must vacate the area by 3:30 PM. Maximum of 4 hunters per party per zone.

4. Rabbit hunting closed the week before and the week of December antlerless deer season and during the January shotgun deer season.
5. Hunting prohibited within posted refuges, safety zones, and on the Wilson-Slaughter Tract. Dogs are not permitted to enter refuges for any reason.
6. Dog training is prohibited on this area.

#### **B. Dove**

1. No person shall hunt doves on state wildlife areas during the early season while possessing shot other than approved nontoxic shot.
2. Regulated dove field (**D**) available by lottery only on Opening day, Labor Day, Tuesday, Thursday, and Saturday of the early season. Lotteries held at 12:00 p.m. at the **Little Creek Check Station**. Hunting hours are from 1:00-5:00 PM. Dove hunting is prohibited on the Logan Lane Tract outside of the regulated dove field during the early season.
3. Dove hunting permitted on entire area (excluding posted refuges, safety zones) during late seasons, no permit required.

#### **C. Turkey**

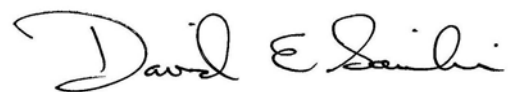
1. Turkey hunting by permit only. Permits awarded through preseason lottery. See Delaware Hunting and Trapping Guide for application.

#### **D. Furbearers**

1. No trapping except by valid contract holders. Trapping rights awarded through competitive bids. Call (302) 739-9912 for bidding information.
2. Raccoon hunting is permitted from Sept 1 – March 31 during legal raccoon hunting seasons.
3. Fox and coyote hunting permitted in season while hunting other game species per these map regulations. Fox chasing is prohibited.

### **WATERFOWL HUNTING**

1. A Wildlife Area Deer Stand / Waterfowl Blind Lottery Permit is required to hunt during all waterfowl seasons.
2. Blinds issued by lottery held at the Little Creek Check Station 2 ½ hours before sunrise. Blinds reissued by a waiting list until 1:00 P.M.
3. Goose pits (16-22) and impoundment blinds (23-31) open on opening days, Tuesday, Thursday and Saturday during all regular waterfowl seasons.
4. Marsh and river blinds and blind sites (32-44) open all days of all seasons during legal shooting hours.
5. Blind 26 is designated for disabled hunters and is awarded via lottery held at 11:00 AM the day prior to the hunt. If not reserved in advance disabled locations are available through the daily lottery.
6. No more than 3 persons per pit, blind, or blind site.
7. No waterfowl hunting from upland fields, except from designated goose blinds and blind sites.
8. All hunting from state-built pits, blinds, or blind sites only.
9. Airboats are prohibited.
10. Park in appropriate parking lots (see map). Do not park at the ramp or on the side of the road. Do not drive into fields.
11. Hunters using impoundment, marsh, and river blinds must have a boat and required safety equipment.
12. Hunters must vacate all hunting areas 1 hour after sunset.
13. This area will be open during the Snow Goose Conservation Order, no permit or sign-in required.



David E. Saveikis, Director

For further information contact the Division of Fish and Wildlife at (302) 739-9912 or the Kent County HQ at (302) 284-4795.

**For emergencies or to report violations please call the Enforcement Section at 1-800-523-3336.**