



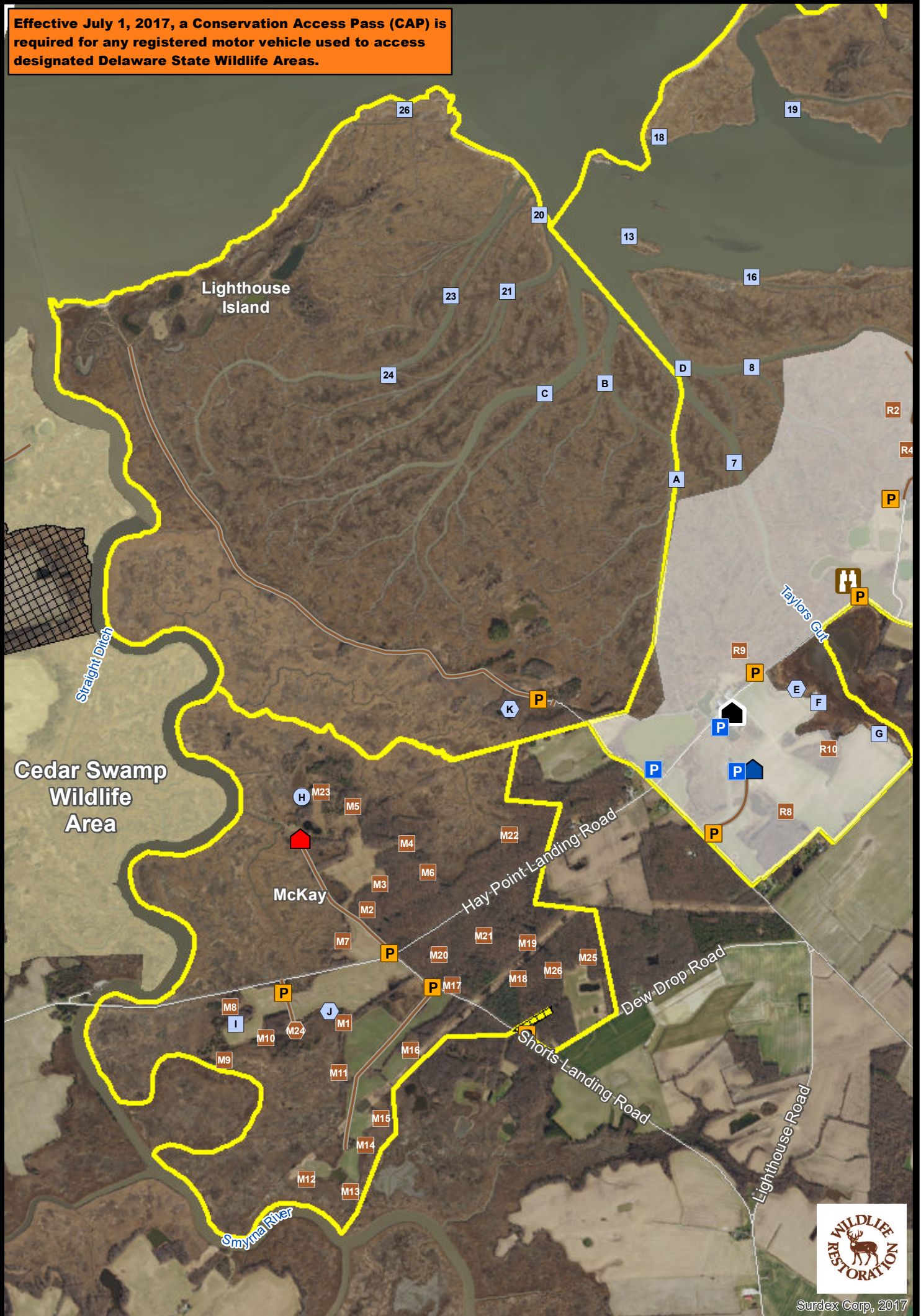
# WOODLAND BEACH WILDLIFE AREA

## McKay & Lighthouse Island Tracts Hunting



*We Bring You Delaware's Great Outdoors  
through Science and Service*

**Effective July 1, 2017, a Conservation Access Pass (CAP) is required for any registered motor vehicle used to access designated Delaware State Wildlife Areas.**



Surdex Corp., 2017

- |               |                    |                        |                    |
|---------------|--------------------|------------------------|--------------------|
| Wildlife Area | Deer Stand         | Waterfowl Blind Site   | McKay Field Office |
| Private Land  | HD Deer Stand      | Wildlife Viewing Tower | AREC               |
| Refuge        | Waterfowl Blind    | Check Station          | Dirt Road          |
| CAP Exempt    | HD Waterfowl Blind |                        |                    |
| CAP Required  |                    |                        |                    |



**THE BOUNDARIES SHOWN ON THIS MAP ARE APPROXIMATE AND ARE ONLY TO BE USED AS A GUIDE.**

**HUNTING**  
**WOODLAND BEACH WILDLIFE AREA**  
Effective July 1, 2020 – June 30, 2021

Persons may use state wildlife areas only as directed by the following rules, which have been established by Wildlife Regulations 3900 of the Division of Fish and Wildlife, pursuant to Section 103, 7 Delaware Code. Please refer to the **General Overview** map for additional access and allowable use information.

**\*As of July 1, 2017, a Conservation Access Pass (CAP) is required for any registered motor vehicle used to access designated public lands owned or managed by the Division of Fish & Wildlife. For more information go to [www.de.gov/fw](http://www.de.gov/fw) or call (302)739-9912.**

### **GENERAL**

1. Persons who possess, consume, or are under the influence of drugs or alcoholic beverages are prohibited from hunting or possessing firearms on Division Lands.
2. Failure to accurately complete and return harvest data cards may result in loss of hunting privileges.
3. Firearms may not be discharged outside of established hunting seasons. Target shooting is prohibited at any time.

### **DEER HUNTING**

**\*\*This area is managed as a Quality Buck Area. Harvesting bucks with outside antler spreads less than 15 inches is prohibited at any time, except youth under age 17 and non-ambulatory disabled hunters.\*\***

**\*\* SUNDAY DEER HUNTING PERMITTED. SEE SUNDAY DEER HUNTING MAPS FOR OPEN AREAS AND HUNTING IMPLEMENT RESTRICTIONS \*\***

#### **A. Archery**

1. Archery hunters may hunt anywhere (excluding refuges and safety zones) but must register for a zone at the Check Station.
2. Archery hunters must register through the lottery and hunt from lottery stands during all firearm deer seasons.
3. Archery hunting is closed during the special youth / non-ambulatory disabled deer hunt.
4. Archery hunters may use temporary portable stands. No permanent deer stands, platforms, ladders, or blinds may be constructed. No screw-in steps, tree spikes, screws, or nails are allowed. All parts of temporary portable deer stands must be removed at the end of each days hunt.

#### **B. Firearm – Muzzleloader, Shotgun, Handgun**

1. A Wildlife Area Deer Stand / Waterfowl Blind Lottery Permit is required to hunt during all deer firearms seasons (except for the Lighthouse Island Tract).
2. Stands issued by lottery at the Woodland Beach Check Station. Drawings held 2 hours before sunrise. A second lottery will be held at 12:00 PM. No permits issued after 1:00.
3. This area **IS NOT OPEN** for the special October antlerless firearms season. Archery hunting is allowed during this season in accordance with state and area laws.
4. Refuge stands (R1-R7) are open during the youth hunt and on Mondays and Fridays of all firearm seasons beginning on the first Monday of November shotgun season.
5. The Lighthouse Island Tract is open for all deer firearm seasons on a first come first served basis, no permit required.
6. Handgun hunting during the January handgun season will be allowed on Tuesday, Thursday, and Saturday only.
7. Deer drives are prohibited.
8. Only one firearm is permitted per deer stand.
9. Disabled deer hunting locations (R3, M24) are available for non-ambulatory hunters. R3 is closed on all refuge hunt days. These locations are awarded via a lottery held at 11:00 AM the day prior to the hunt. If not reserved in advance disabled locations are available through the daily lottery.

### **UPLAND HUNTING**

#### **A. Small Game**

1. Small game hunters must display at least 250 square inches of blaze orange while hunting on State Wildlife Areas.
2. Squirrel hunting permitted in season, no permit required.
3. Rabbit hunting by lottery only on Monday, Wednesday, and Friday. Lottery held at 8:00 AM at the Woodland Beach Check

Station. Hunters must vacate the area by 3:30 PM. Maximum of 4 hunters per party per zone.

4. Rabbit hunting closed the week before and the week of December antlerless deer season and during the January shotgun deer season.
5. Hunting prohibited within posted refuges and safety zones and dogs are not permitted to enter refuges for any reason.
6. Rabbit dogs may be trained only on the following Sundays: September 6, 13, 20, 27, October 4, 25, November 1, 8.

#### **B. Dove**

1. No person shall hunt doves on state wildlife areas during the early season while possessing shot other than approved nontoxic shot.
2. Dove hunting permitted on entire area (excluding posted refuges, safety zones), no permit required.

#### **C. Turkey**

1. Turkey hunting by permit only. Permits awarded through preseason lottery. See Delaware Hunting and Trapping Guide for application.

#### **D. Furbearers**

1. No trapping except by valid contract holders. Trapping rights awarded through competitive bids. Call (302) 739-9912 for bidding information.
2. Raccoon hunting is permitted from Sept 1 – March 31 during legal raccoon hunting seasons.
3. Fox and coyote hunting permitted in season while hunting other game species per these map regulations. No fox chasing permitted during any deer firearm season or prior to 1:00 PM during turkey season.

### **WATERFOWL HUNTING**

1. A Wildlife Area Deer Stand / Waterfowl Blind Lottery Permit is required to hunt during all waterfowl seasons.
2. All hunting from state-built pits, blinds, or blind sites only.
3. Blinds issued by lottery held at the Woodland Beach Check Station 2 hours before sunrise. Blinds issued until 1:00 P.M.
4. Marsh blinds are open all days of all regular waterfowl seasons. Blinds within Taylors Gut impoundment and designated goose pits are open on opening days, Tuesday, Thursday and Saturday during all regular waterfowl seasons.
5. Blinds E, J, and K are designated for disabled hunters and are awarded via lottery held at 11:00 AM the day prior to the hunt. If not reserved in advance disabled locations are available through the daily lottery.
6. Waterfowl hunting is prohibited on the Lighthouse Island and Cabin tracts.
7. No more than 3 persons per pit, blind, or blind site.
8. No waterfowl hunting from upland fields, except from designated goose blinds and blind sites.
9. Waterfowl hunting from blind sites must occur within a 35 yard radius of designated blind sites.
10. Airboats are prohibited.
11. Park in appropriate parking lots (see map). Do not park at the ramp or on the side of the road. Do not drive into fields.
12. Hunters using marsh and river blinds must have a boat and required safety equipment.
13. This area will be open during the Snow Goose Conservation Order. See official seasons and regulations. No permit or sign-in required during the conservation order.



David E. Saveikis, Director

For further information contact the Division of Fish and Wildlife at (302) 739-9912, Kent County HQ: (302) 284-4795, or Woodland Beach Check Station: (302) 653-4802.

**For emergencies or to report violations please call the Enforcement Section at 1-800-523-3336.**