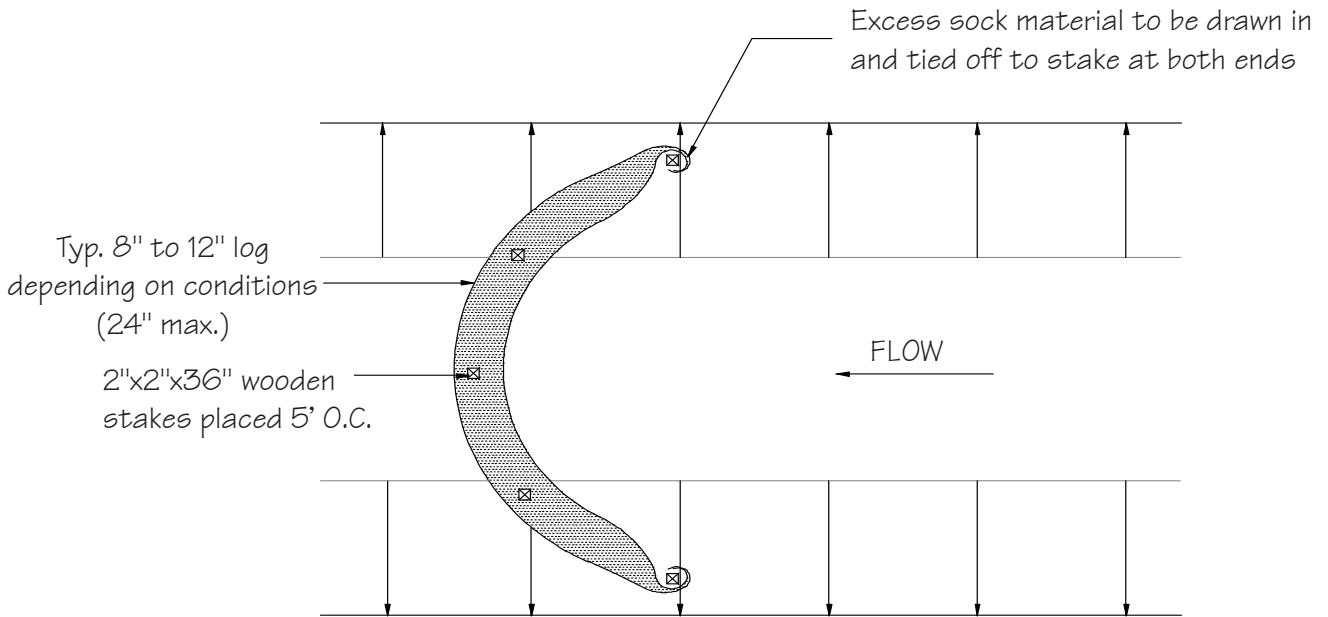


Compost Log Check Dam



Plan

DATA

Slope (S)
Spacing (X)
Log diameter (D)

Source:

Adapted from
FILTREXX Technologies

Symbol:

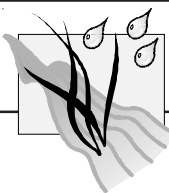


Detail No.

DE-ESC-3.3.6.2

Sheet 1 of 2

Effective FEB 2019



Standard Detail & Specifications

Compost Log Check Dam

Construction Notes:

1. Swales and channels shall be prepared in accordance with the construction specifications described in the **Standards and Specifications for Temporary Berm, Temporary Swale, Vegetated Channel, or Diversions**.
2. The check dam shall be constructed of compost filter log. The compost filter log shall be placed so that it extends across the full width of the channel.
3. The top of the check dam shall be constructed so that the center is approximately 6" lower than the outer edges, forming a weir that the water can flow across. The ends of the compost filter log shall wrap upslope to prevent end cutting.
4. The maximum height of the check dam at the center of the weir must not exceed two (2) feet.
5. Maximum spacing between dams should be the distance in the channel where the toe of the upstream dam is at the same elevation as the top of the downstream dam. (See **Standard & Specifications for Check Dams** for design chart.)

Source:

Adapted from
FILTREXX Technologies

Symbol:



Detail No.

DE-ESC-3.3.6.2

Sheet 2 of 2

Effective FEB 2019